



ALCHEMYTM

England • 1977

EXTRAORDINARY DESIGN

**P955
Baroque Rose**
Necklace

Discovered in a former boudoir of Palais Cardinal, Paris, this jewel was said to have been given to the favourite lover of the powerful c17 French war minister, clergyman and notorious womaniser, Cardinal Richelieu. ‡

**P952
Cross Of Baphomet**
Pendant

A Templar counter-stroke against the Inquisition, with the skull of Baphomet impaled on the cross of crucifixion.

**P951 ►
Cruxinomica**
Pendant

A darkly Lovecraftian rendition of the holy cross of the crusader.

**P953 ►
Hand Of Glory**
Pendant

The severed and mummified hand of an executed felon, used to assist a new offender in their furtive activity, together with the Hamsa eye of protection to ward off any evil threats.

**P432B ▲
Black Widow**
Necklace

The deadly predator, poised to sink its irresistible fangs. ‡

**P940 ▲
Lucrezia's Fix**
Necklace

An active woman's discreet solution to a troublesome 'encounter', as exemplified by the infamously licentious, incestuous and murderous c16 femme fatale noblewoman, Lucrezia Borgia.

**P936 ►
Drankh**
Pendant

The Egyptian ankh, venerable symbol of eternity, is subsumed by the irresistible energy of the medieval dragon.

**P947 ▲
Unicursal Hex**
Pendant

Used in the c16th by philosophers and hermetic occultists to represent the 'figure of love', and by the infamous Aleister Crowley as the heavenly macrocosm, the entwining of the planetary and elemental forces.

**P954 ▲
The Magical Phase**
Necklace

A pagan, Elven Star is inscribed within the triple moon and surrounded by the seven classical planets, to invoke all the energies of the cosmos.

**R246 ►
Nighthawk**
Wrap Ring (adjustable)

A sinister, vampiric creature, thirsting for unsuspecting prey to carelessly cross their path.

**P948
Pax**
Pendant

A runic depiction of the universal symbol of peace - Nuclear Disarmament.

**R247
Howl At The Moon**
Wrap Ring (adjustable)

A ravenous, voracious beast of unstoppable force, pleading succour from their overpowering master. ‡

AUTUMN WINTER COLLECTION

ALCHEMY



England · 1977



E472 ▲ Black Rose Droppers

Earrings (pair)

A bloom plucked from a devotional wreath of black roses, symbolising a dark and mysterious love.



▲ E470 Nightflight

Earrings (pair)

Flying bats, silent and motionless, await the final vestige of light - so, the raptors may play...



Model is wearing :

P955 Baroque Rose necklace;
E472 Black Rose Droppers earrings

Model & photo: @Vesmedinia



E466 ▲ Desire Moi

Earrings (pair)

Never underestimate the irresistible potency of Cupid's arrow. ‡

Matches P926 Desire Moi necklace.



E471 ▲ Planchette

Earrings (pair)

Let the whispering voices from the Ouija guide you through your mortal existence.

Matches P937 Crowley's Spirit Board necklace.



▲ E474 Wiccan Moon

Earrings (pair)

The pearly full moon, invoking healing, occult protection and wealth. ‡
Set with Mother-Of-Pearl moonstones.



▲ E473 Rabenschadel Schlenker

Earrings (pair)

A token of the great black bird, famous for it's prophetic powers and capable of foretelling death.



P945
Witches Cauldron

Pendant

Mystically charmed, kettle black and stirring-up trouble again. A subtle expression of your uniqueness and remarkable talents.



P937
Crowley's Spirit Board

Necklace

The enduring legacy of the The Beast; revealing the mysteries uncovered by Crowley's invocations. A miniature working Spirit or Ouija board if you prefer! Summon the spirits if you dare! Complete with instructions!



P941
Take Me With You

Necklace

Mortal devotion, faith and trust must endure, to follow to the very end.



P939
Playing The Devil's Tune

Pendant

Where dance is, there is the devil. (Saint John Chrysostom) - Cavort and make merry and to Hell with refrain!



P938
My Forever Friend

Necklace

You're never alone with your feline familiar.



E467
Pagan Dream Catcher

Earrings (Pair)

Raven spirit and great protector, shedding but a single feather to float beneath a weightless moon. To ward off whispered evil on the cusp of midnight, ensnared below in a web of dreams.



E468
Feline Moondream

Earring

Daydreams are for pussies, but the silent creatures of the night have serious ambitions and aspirations beyond even the comprehension of mere diurnal mortals.



P943
Key To Eternity

Necklace

You've never entered this place before - dare you commit yourself? The most beautiful couples necklace featuring a padlock and key design. The key fits into the lock demonstrating your eternal love!

P942
A Pact With A Prince

Necklace

A fusion of magical sigils to entice and invoke the powers of the moon and angels of dark desire.



P944
Personal Baphomet

Pendant

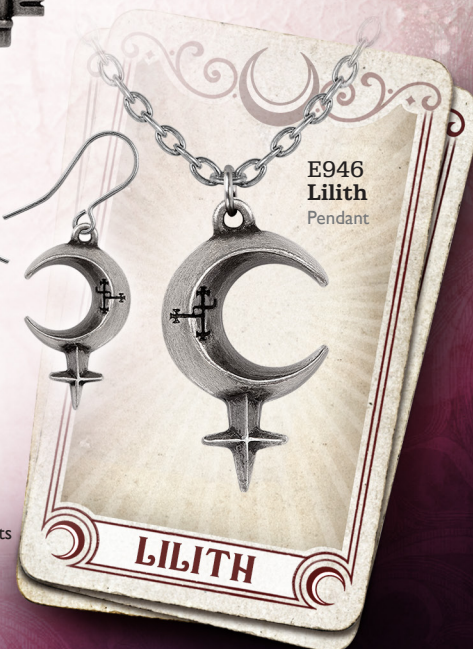
Feeling unknown, and you're all alone. Someone to hear your prayers, someone who cares, someone who's there.



E469
Lilith Earrings

Earrings (Pair)

Eve, the ultimate, emancipated female of Biblical and Babylonian mythology, feared by all misogynists as the primal she-devil.



E946
Lilith

Pendant

ALCHEMY[®]™



England · 1977



Model is wearing :
P937 Crowley's Spirit Board Necklace
R237 Token of Love Ring
R244 A Night with Goethe

Model & Photo : @Vesmedinia



Model is wearing :
P925 Guardian Of Soma pendant
Model & photo: @Vesmedinia



E460 ▲
Eve's Triquetra
Dropper Earrings (pair)
The triple goddess, with a touch of female wilfulness.



E458 ▲
A Pact With A Prince
Dropper Earrings (pair)
A fusion of magical sigils to invoke the powers of the moon and angels of dark desire.

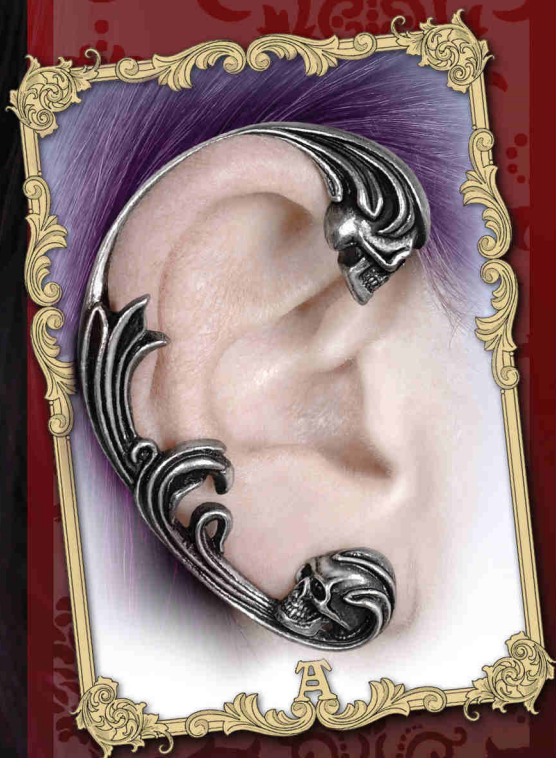


E459 ▲
A Night With Goethe
Dropper Earrings (pair)
Nocturnal stirrings, returning in search of a lost lover.

ALCHEMY



England · 1977



E461 ▲
Dece's de Rocaille
Earwrap
The decadent celebration of the exotic realm of death.



**P924 ▲
Danu Pendant**
Pendant
Mother of the earth and
of all the gods. ‡



**P930 ▲
Seal Of Lucifer**
Pendant
The fallen angel, breaker of
the 7th deadly sin.



**P925 ▲
Guardian Of Soma**
Pendant
The Elixir of Life, preserved by
the faithful alchemist's familiar. ‡



**P935 ▲
Astro-Lunial Compass**
Pendant
A seer's instrument for foretelling
the path to a heart's desire.



**P927 ▲
Eternal Sleep**
Pendant
The fulfilment of a revenant's
lasting peace.



**P929 ▲
Eve's Triquetra**
Pendant
The triple goddess, with a touch of
female wilfulness. ‡



**◀ P928
Carpathian Rose**
Necklace
Where the darkest of romances
prevail. ‡



**P926 ▶
Desire Moi**
Necklace
Erotic love will overwhelm
any victim of Cupid's arrow. ‡

EARRINGS



ALCHEMY



England • 1977

All earrings on this page are supplied on surgical steel earwires.



**E462 ▲
Coeur Crane**

Dropper Earrings (pair)

The ancient bird of legend with beak that points the way to the immortal afterlife, though we all must first pass through the portal of the grave.



**E464 ▲
Gothic Devotion Crosses**

Dropper Earrings (pair)

One of the most potent and widely used amulets in the world, the cross, here in the form of the Apostle's Cross, used everywhere in High Church Christian devotion.



**E463 ▲
Wings Of Midnight**

Dropper Earrings (pair)

Taking flight from a subterranean lair, to whisper blessings on a phantom zephyr. So gracing the chosen ones of the dark goddess, with the wings of midnight. Black pewter.



**E465 ▲
Passio Wings Of Love**

Dropper Earrings (pair)

Gothic love; virtue and corruption, ecstasy and torment, the angel meets the demon and hearts collide.

NECKWEAR



P931 ▲
Petite Affair Du Coeur

Pendant

A dark and Delphic romance of the heart; an assignation between two strange and exotic creatures from another place, amorous beneath the stars in the night sky. With red enamel & black crystal dropper. ‡



P932 ▲
Noose Around Your Neck

Pendant

The most common method of execution from Mediaeval times, and a squalid and degrading end to the life of a mere mortal.



P934 ▲
Blacksoul Bijou

Pendant

The black demon heart of a gothic seductress, nocturnally enticing her prey with ravishing enchantment. Antiqued pewter heart with black-enamelled fill and bat wings.



P933 ▲
Marie Antoinette

Pendant

Flaunting the regal finesse of a doomed age. Guillotine blade bearing the last traces of aristocratic life; with fine crystal blood drop. ‡

Model is wearing :

P933 Marie Antoinette pendant
R219 Triple Goddess ring

Model : **Dragonfly**
[facebook.com/GuiDragonfly](https://www.facebook.com/GuiDragonfly)

PENDANTS

▼ P920
Sombre Desir
Necklace
Oh but to resist
these wicked desires!

◀ P923
Templar's Bane
Pendant
The sigil of Baphomet,
suffusing rectitude
with the essence
of corruption.

◀ P919
Reflections of Poe
Necklace
Inspiring Edgar Allan Poe,
master of the macabre to
give poetic voice to the raven.

◀ P921
Baphometica
Necklace
Ancient goat skulled deity,
whispering wisdom from the
lost cults of antiquity. ‡

P922▶
Lunaeca
Necklace
Spirit of the night, invoked
for a battle won.
Adjustable Sizes : T/Q - Y/W

RINGS

R242
Battle Ring
Ring
The show of prowess
for a battle won.
Adjustable Sizes : T/Q - Y/W

R243
Last Embrace
Ring
Fond memories of a
once warm intimacy.
Adjustable Sizes : N/L - T/Q - Y/W

R241
Wild Black Rose
Ring
The rose of black romance
will entrap its heart's desire
and seduce them.
Adjustable Sizes : N/L - T/Q

R245
Dragon's Lure
Ring
Like a whispering shoulder devil
or a witches familiar, this tortuous
personal miniature dragon coils
itself around your finger.
Adjustable Sizes : N/L - T/Q - Y/W

R244
A Night With Goethe
Ring
Nocturnal stirrings, returning from
the grave in search of a lost lover,
the creature roams.
Adjustable Sizes : N/L - T/Q - Y/W

‡ Specified crystal colours are subject to availability and may be substituted.

ALCHEMY



England · 1977

EARRINGS



E457

Cauchemar

Stud Earrings (Pair)

Nightmare - a soul eclipsed by the powers of darkness.



E450

Pumpkin Skull

Stud Earrings (Pair)

Born from ancient Irish origin. The carved demonic face scares away evil spirits.



E449

Baphomet Studs

Stud Earrings (Pair)

Inspired by Eliphas Levi's portrait of the goat-headed deity, and the reason for the Knights Templar's downfall.

Model is wearing :

P919 Reflections of Poe Necklace

R241 Wild Black Rose Ring

R243 Last Embrace Ring

R244 A Night with Goethe

Model & Photo : @Vesmedinia

BAPHOMET

P906
Baphomet
Pendant



Éliphas Lévi's portrait of the goat-headed deity, and the reason for the Knights Templar's downfall.



R239
Baphomet
Ring

Inspired by Éliphas Lévi's portrait of the goat-headed deity, and the reason for the Knights Templar's downfall.
(Sizes : N, Q, T, W, Y)



A138
Baphomet
Wrist-Strap

Éliphas Lévi's portrait of the goat-headed deity, and the reason for the Knights Templar's downfall. On adjustable leather strap.

Model is wearing -
Baphomet Set : R239, A138 & P906

Model : **Dark Wolf**
@Dark.Wolf.Model

Photo : **Les Songes De Lilou**
@Les.Songes.De.Lilou



P904
Emerald Spiderling
Necklace

A smaller, but no less deadly predator, still poised to sink its irresistible fangs. ‡💎



P916
Infinity Dragon
Pendant
An underworld creature portraying the concept of infinity.



P912
Crucifaustan
Pendant
Purgatorial anguish for Faustus and his pact with the Devil.



P918
Mini Jormungand
Pendant
A discreetly talismanic ouroboros formed of the legendary Norse Midgard Serpent.



P917
Flight of Airus
Pendant
The distant shape of a profound wonder. New matching earrings also available (E442).



P913
Black Rose Enigma
Necklace
The dark rose of secrets, understood by you alone.



P905
Bouquet of Love
Necklace
A passionate symbol of devotion from the heart of a dark one. ‡💎



P900
Batheart - The Vampire's Kiss
Necklace
The silent, almost imperceptible kiss of the vampire. ‡💎



P911
Sin Horned God
Pendant
The male counterpart and consort to the wiccan's female Triple Goddess.



P907
Mon Amour De Soubise
Necklace
'My Love of Soubise' - a feature betraying an illicit affaire at the prince's palace. ‡💎

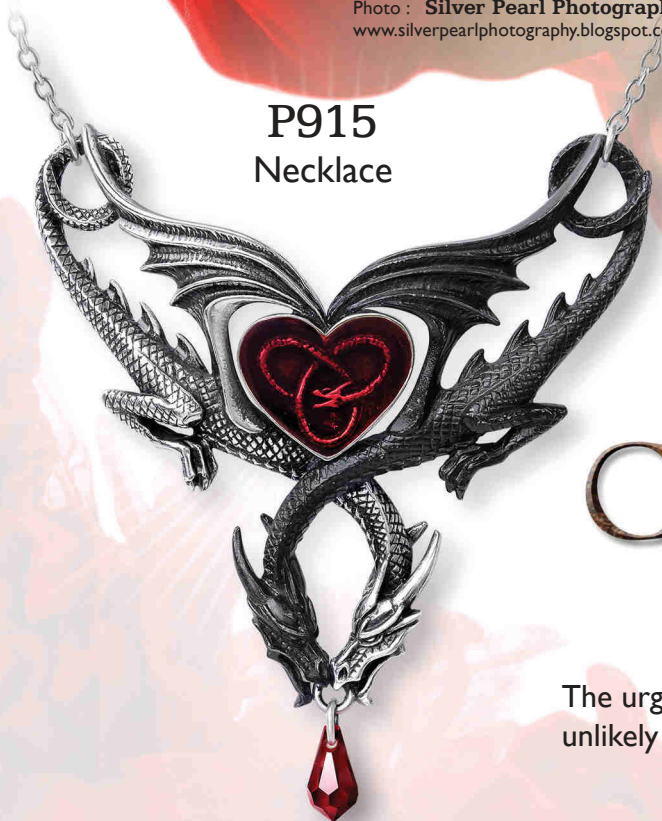
Model is wearing -

E437R Empyrean Tear Earrings
P915 The Confluence of
Opposites Necklace

Model : **La Esmeralda**
@Alternative.Model.La.Esmeralda

Photo : **Silver Pearl Photography**
www.silverpearlphotography.blogspot.com

P915
Necklace



THE CONFLUENCE OF OPPOSITES

The urgent, passionate union of divergent beasts, forging an unlikely bond of eternal ardour, energy and spiritual affinity. ‡



▲
P889
Sacred Cat Vanitas
Pendant
The face of the imperious feline deity preening itself to perfection, from either side projecting its aura of confident supremacy. One side is a mirror, while the other is the face of the Sacred Cat.



▲
P895
Feline Felicity
Pendant
Silent, stealthy and omnipresent, your ailuros companion confidently reflects upon your destiny.

Model is wearing -
P895 Feline Felicity pendant.
Model : **Mahafsoun**
www.facebook.com/MahafsounArt



P884 ▶
Love Cat
Pendant
Feline love is only bestowed upon the most mysteriously exceptional individual. With translucent smoky enamel.

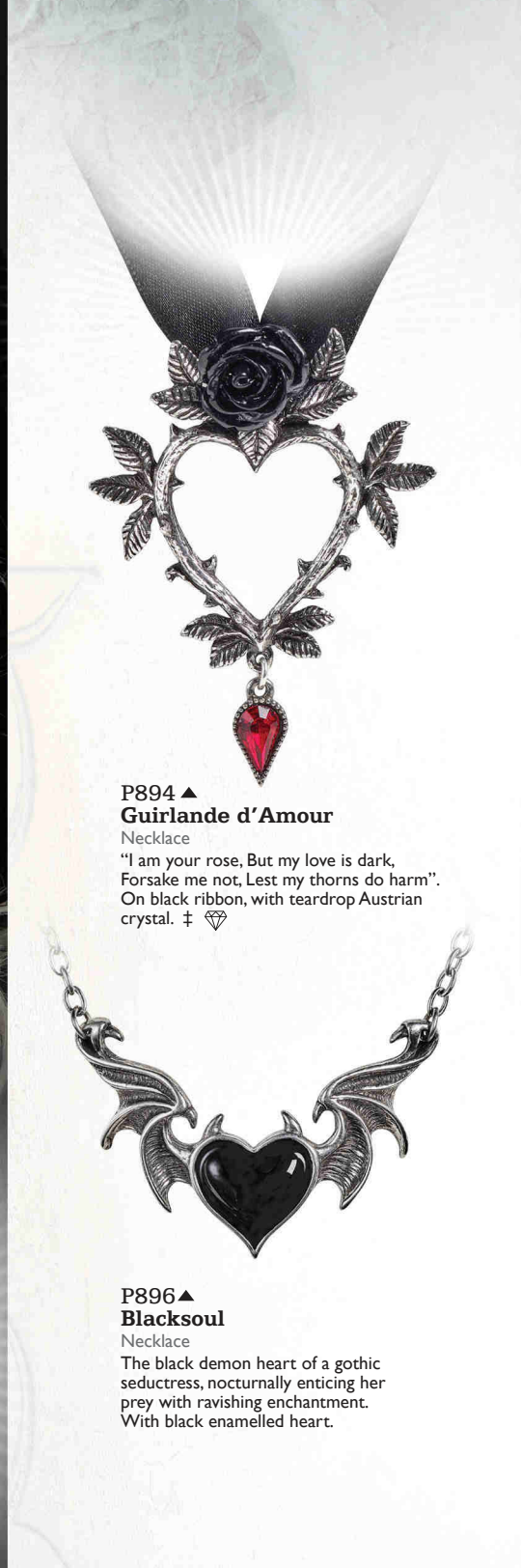


▲
P879
Minnaloushe
Necklace

Minnaloushe creeps and stares, lifting his changing eyes to the changing moon. ‡



Model is wearing -
P873 Pagan Dream Catcher
necklace.
Model : **Dragonfly**
facebook.com/GuiDragonfly



P894 ▲
Guirlande d'Amour
Necklace
"I am your rose, But my love is dark,
Forsake me not, Lest my thorns do harm".
On black ribbon, with teardrop Austrian
crystal. ‡ ✦



P896 ▲
Blacksoul
Necklace
The black demon heart of a gothic
seductress, nocturnally enticing her
prey with ravishing enchantment.
With black enamelled heart.

ALCHEMY
England · 1977

◀P873
Pagan Dream Catcher
Necklace
With a pentagram woven into
its web, the dream snare deflects
evil influences and misfortune. ‡ ✦



**P871
Athame**
Pendant

The ceremonial, magic ritual dagger of Wicca. ‡



**P881
RIP Rose**
Pendant

Dark and deadly passion from beyond the grave.



**P876
Ravenette**
Necklace

The darkened quietude of sorrow. New matching ring available, R232.



**P870
The Black Goddess**
Necklace

The Triple Moon Goddess, with an oblique perspective. ‡



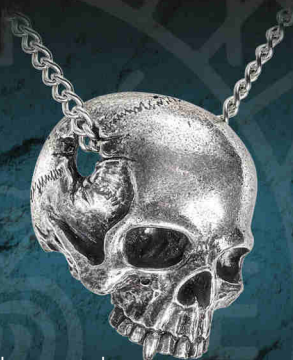
**P874
Tercia Serpent**
Necklace

Three coiled serpent symbolising the pagan Rule of Three. ‡



**P878
Elven Star**
Pendant

The Wiccan symbol of the septagram and the sacred Faery tradition.



**P886 ▶
Remains**
Pendant

The hard featureless receptacle of the soul, stripped down from its mortal vanity.



**P888 ▶
Mammon Of The Deep**
Pendant

A rapacious treasure-hoarding demon from the watery abyss, guardian of immeasurable wealth, surrendered by the forlorn victims of the cruel seas. With Hematine cabochon. ‡



Model is wearing :
P855 Witches Heart pendant.
 Model : **Dragonfly**
 facebook.com/GuiDragonfly



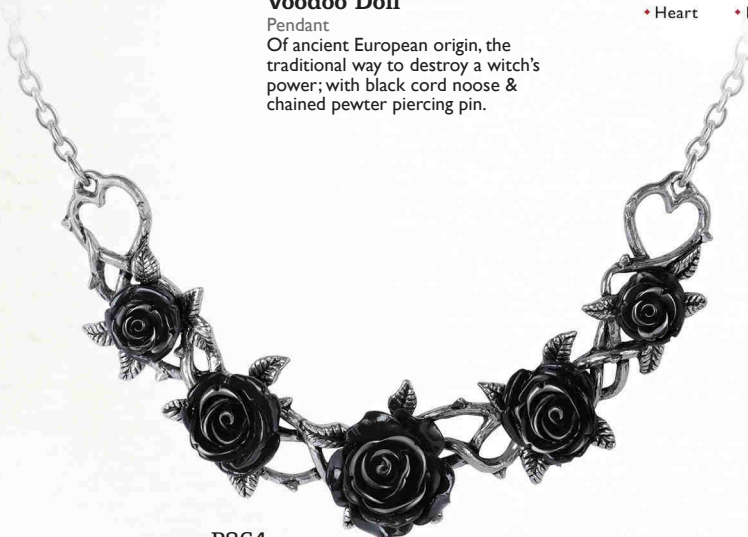
**P855
 Witches Heart**
 Pendant

Dark practices from the mists of antiquity, perhaps to scorn a former lover?...With black pewter heart & chained pewter piercing nail.



**P769
 Voodoo Doll**
 Pendant

Of ancient European origin, the traditional way to destroy a witch's power; with black cord noose & chained pewter piercing pin.



**P864
 Rose Briar**
 Necklace

A grave but beautiful garland of arcane mystique.



**P860
 Petit Ouija**
 Pendant

Peep into the underworld with a talking board. Set with a red taxidermal eye.



**P766
 Planchette**
 Pendant

The spiritualist's device for communicating with the dead... ICU. Set with a realistic taxidermal eye.



**P853
 Sophia Serpent**
 Necklace

The Ouroboros, ancient symbol of eternity, rebirth and unity. ‡ ♦

**P847
Gorgon's Eye**

Necklace

The very essence of the gorgon
Stheno's dreaded evil eye.
With green Austrian crystal
eye. ‡ ✦

**P848
Wounded By Love**

Necklace

The naked heart of an innocent,
pierced by ill-fated romance. With
translucent red enamel & black
acrylic rose.

**P868
Infinite Love**

Necklace

'Amor Aeternus'
Eternal Love and
the mysterious suitor.

Model is wearing -

P868 Infinite Love Necklace
E425 Love Bats Earrings

Model : **La Esmeralda**
@Alternative.Model.La.Esmeralda

Photo : **Silver Pearl Photography**
www.silverpearlphotography.blogspot.com

**P810
Triple Goddess**

Choker

The pearly full moon flanked by
the waxing and waning crescents
invokes healing, occult protection
and wealth. With mother-of-pearl
& Austrian crystals. ‡ ✦

**P786
Wiccan
Elemental
Pentacle**

Necklace

The five elements
conjoined within
the circle of the
universe. ‡ ✦

**P845
Goddess**

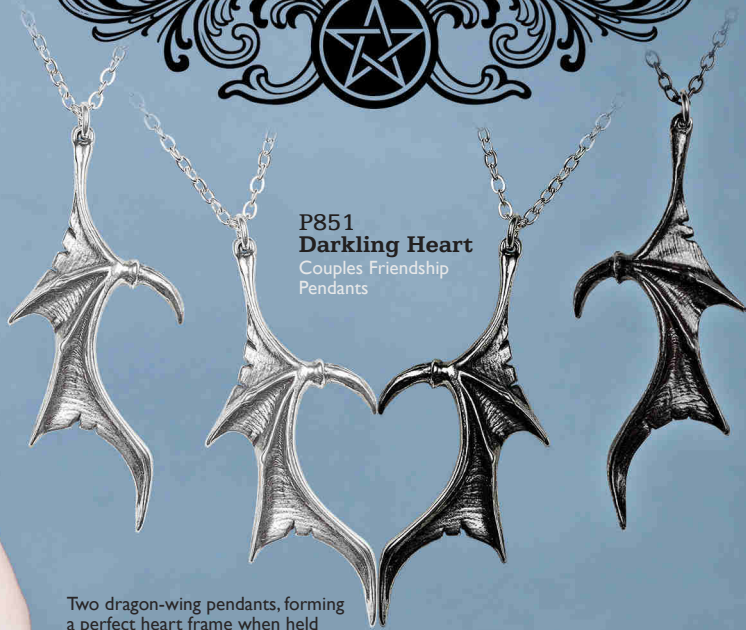
Pendant

Combining fire, water,
earth, air and spirit with
Wicca's triple moon
and a crystal to focus
your magickal
energies. With
Austrian crystal
dropper. ‡ ✦

FRIENDSHIP NECKLACES



**P851
Darkling Heart**
Couples Friendship
Pendants



Two dragon-wing pendants, forming a perfect heart frame when held together. In high contrast black & silver finishes.



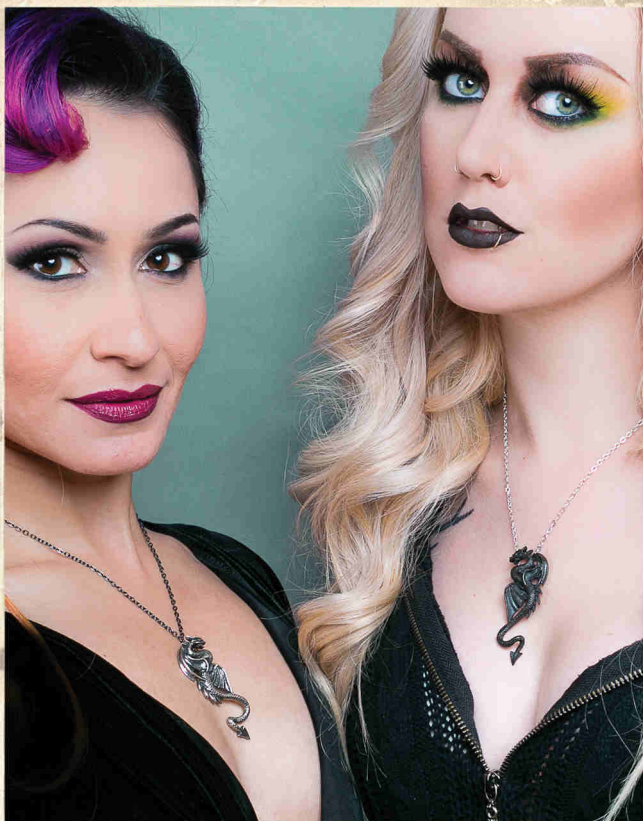
**P834
Coeur Crâne**
Couples Raven
Promise Necklace

Two complementing raven's skulls; when together they're a discreet heart of bone - when apart, a covert token of a netherworld affair. Sold as two separate necklaces.

**P811
Draconic Tryst**
Sweetheart / Couples /
Friendship Necklace

Consorts of darkness collude and entwine with adamantine embrace, to belong to one another for eternity. An interlocking, separable, two-tone double necklace.

Magnetic catch fastening.



Model : **Honey Hulala**
@honey_hulala

Model : **Dorian Dane**
@dorian.dane

ROSE GARDEN

Alchemy's Nocturnal Bouquet



P843
New Romance
Pendant

The new moon brings with it a promise of new love. With black acrylic rose.



P844
Færie Glade
Necklace

The ephemeral delicacy of a garden fairy reflecting the short but sweet life of a black rose. With black acrylic rose.



P839
Love Never Dies
Necklace

Sending love from the grave... With black acrylic rose.



Model is wearing :
P843 New Romance pendant.



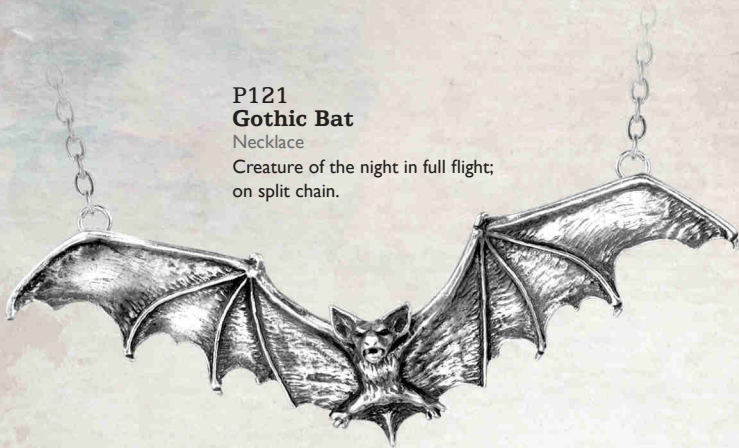
Model is wearing :
P839 Love Never Dies necklace.

Model & Photography :
Magda Corvinus
@magda_corvinus



Model is wearing :
P818 Kraken necklace
R221 Kraken ring

Model : **Lara Mauve** - @lara_mauve
Photo : **Annie Bertram** - www.anniebertram.com



**P121
Gothic Bat**

Necklace

Creature of the night in full flight;
on split chain.



P807

White Hart, Black Rose

Necklace

The hart's skull and a Black Rose is the spell
to invoke arcane and passionate encounters.
An antiqued pewter stag's skull with a rose
garland about its horns, the centre one being
of black acrylic.

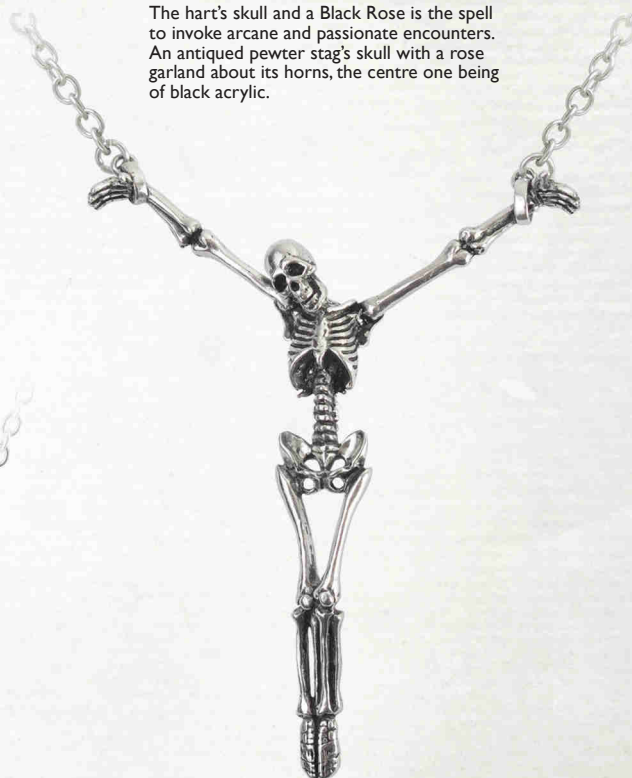


P758

Black Rosifix

Pendant

The tangled cross of deep
devotion, passion and
eternal mystery. ‡ ♦



P722

Alter Orbis

Necklace

A pitifully brutal end to mortal
existence, and an exquisite entry
into the "Other World".



R221



E409



P818

Kraken

Necklace

You strain to escape the feel of the
monstrous tentacles writhing to take
a stranglehold on your neck...
Set with a large, Volcano effect,
pear-shaped Austrian crystal. ‡ ♦



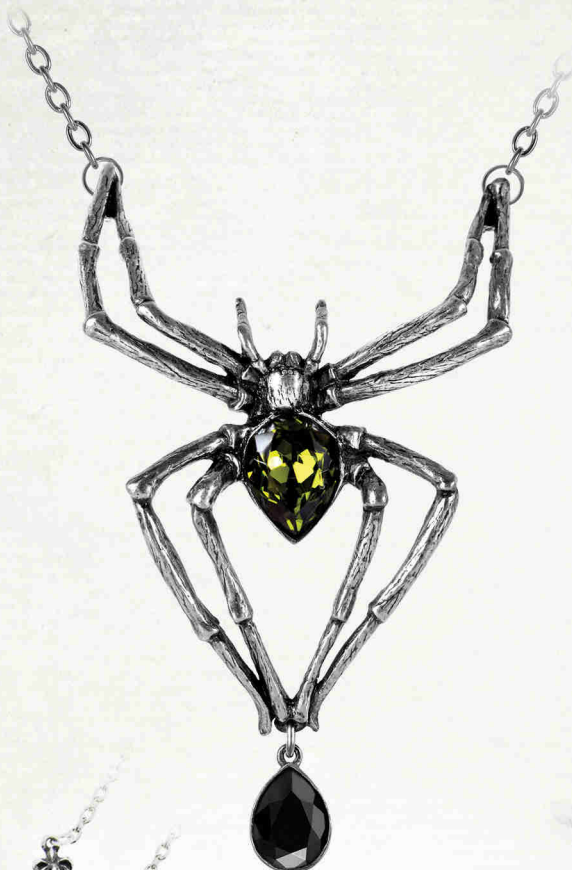
P229
Wolverine Moon
Pendant
Beware the full moon and the silver dagger; with two moonstones. ‡



P832
Eye Of The Dragon
Necklace
The penetrating stare of a fire-eyed lacertilia of chaos. With a vivid green Austrian crystal eye. ‡



P235
Dante's Hex
Pendant
Mediaeval style pentagram.



P432
Emerald venom
Necklace
The deadly predator, poised to sink its irresistible fangs; with two Austrian crystals. ‡



P797
Maloik:
Sign of The Horns: Maschio
Pendant
The 'Sign of the Horns' ancient amuletic protection against bad luck and the evil eye and the classic salute in rock cultures.



P503B
Queen Of The Night
Necklace
The antipathy of the ancient Iranian prophet sage Zoroaster's 'Moral Order'. A flamboyant Austrian crystal-laden baroque extravagance representing opulence and decadence. ‡



P792
Affaire du Coeur
Pendant
A dark and Delphic romance of the heart between two strange and exotic creatures. ‡
With matching earrings, E414.





▲
P346
Anguis Aeternus

Pendant

The Dragon of Eternity sustains
the faceted vitrial crystal of life;
Austrian crystal. ‡



▲
P607
Sucre Vert Absinthe Spoon

Pendant

Green Sugar: a miniature wearable token
of a secret life; an Alchemy absinthe spoon,
signifying an existence dedicated to hedonistic
pleasure and sublime aestheticism; set with
large, limpid Emerald green Austrian crystal.
‡



Model is wearing -

P432 Emerald Venom necklace

R222 Emerald Venom ring

Model : Obsidian Kerttu

facebook.com/ObsidianKerttuOfficial/

Photo : Nevena Mitrovic

instagram.com/nena.mit/



**P447
Blood Moon**
Pendant
A skein of bats flitters about
this deep and sinister portent.



**P721
The Blood
Rose Heart**
Necklace
A dark romance secretly
blossoms from the life blood
of a once broken heart; with
Austrian crystals set beneath
the red enamel blood. ‡ ♦



**ULFP20
Devil Heart**
Pendant
Love is sinful, naughty and oh, so
much fun! With translucent red
enamelled heart & Austrian
crystal highlights. ‡ ♦



**P746
Blood Heart**
Necklace
The female corsair, amorous she-wolf
and destroyer of men's hearts;
red enamelled heart with two
acrylic roses on black ribbon.



**ULFP1
Swallow
Heart**
Necklace
Two tattoo-style swallows
holding a red crystal heart;
on fine trace chain. ‡ ♦



**P816
Cat Sith**
Pendant
Superstition and folklore pervade
the mysterious black cat, known
in Celtic mythology as the fairy
Cat Sith. Black pewter pendant
inset with Austrian Siam
crystal eyes. ‡ ♦



**P823
Nocte Amor**
Choker
Wings of the night, guiding the
wearer to a dark haven of passion.
On a 10mm wide, faux leather choker.



**P695
The Romance
Of The Black Rose**
Pendant
The most desired and most
unattainable bloom known to
man - an impossible dream!
On 18" chain.



Model is wearing -
P721 The Blood Rose Heart necklace
R134 Betrothal ring

Model : **Obsidian Kerttu**
facebook.com/ObsidianKerttuOfficial/
Photo : **Nevena Mitrovic**
instagram.com/nena.mit/



**P827 ▲
Eye Of Providence**

Pendant

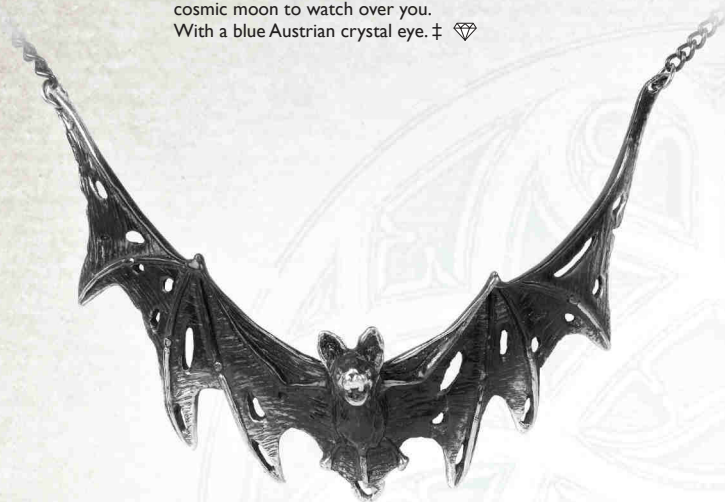
The all-seeing eye of God and the cosmic moon to watch over you. With a blue Austrian crystal eye. ‡ ♦



**P221 ►
Ankh Of The Dead**

Necklace

Vampyre's talisman of eternity, incorporating its secret life-blood blade inside the symbolic scabbard; in antique silver-coloured pewter.



**P765 ▲
Villa Diodati**

Necklace

Flitting through the silent candlelit darkness of the lakeside manor, the creature gives rise to the birth of Dracula.



**P700 ▲
Bacchanal Rose**

Necklace

A sumptuous necklace with a romantic motif hiding, or revealing, a secret libertine passion for wine and sensual pleasures; with black acrylic roses & Austrian crystals. ‡ ♦



**◄P193
Black Raven**

Pendant

In two-tone, blackened pewter with polished mount. The Raven, the C. 20th symbol of the undead; on 27" ball chain.



E333



**P697 ▲
Ravenine**

Pendant

The raven, an ancient symbol of protection, information and dark secrets. On 18" chain.



**P752 ▲
Rabeschadel Kleine**

Pendant

A token of the great black bird, famous for its prophetic powers and capable of foretelling death.

Model is wearing :

P700 Bacchanal Rose necklace.

Model : **Elaine Valerie**

Photo : **Annie Bertram** - www.anniebertram.com



P808
Awaiting
The Eventide
Pendant

A roosting vamp, silent and motionless, hungrily awaits the dusk.



P158
Vampyr
Pendant

Vision of the nocturnal nightmare.



P597
Om Strygia
Pendant

A vampire bat of Balkan severity and proportions.



P598
Kiss The Night
Pendant

Discreetly tokening the owner's alternative tendencies.



P600
La Nuit
Pendant

A crystal luxuriance on the wings of the night; with Austrian teardrop crystal. ‡



**P188 ▲
Anguistralobe**

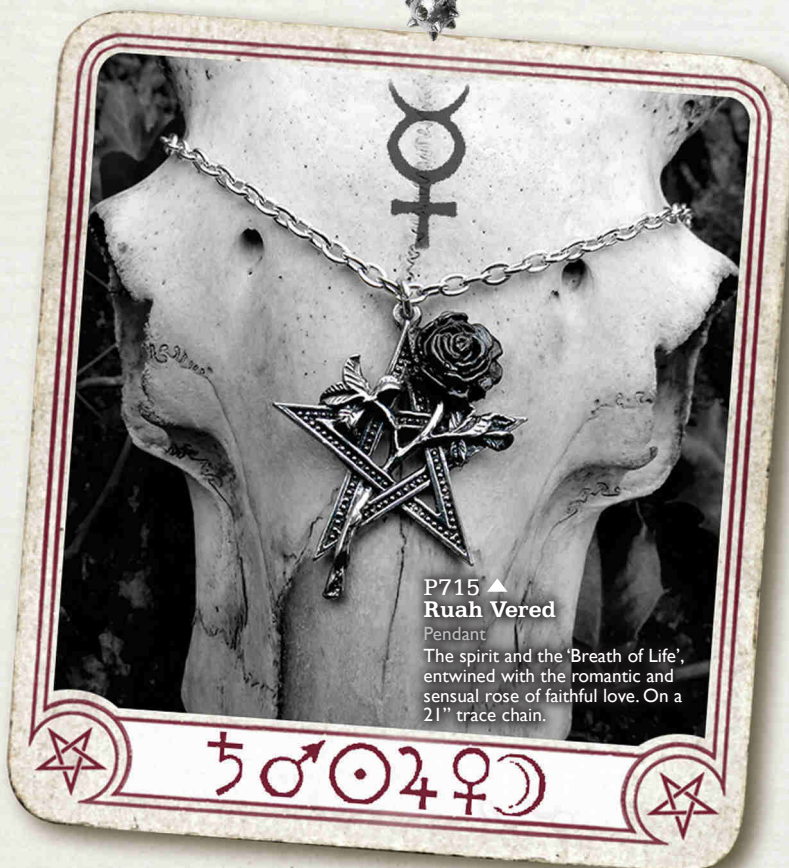
Pendant

Working miniature of an C18th instrument to measure the direct path of destiny between specified heavenly bodies; pewter and brass.

**P751 ►
Geistalon**

Pendant

Fear from the darkness - the thundering phantom of an armoured cataphract unicorn.



**P715 ▲
Ruah Vered**

Pendant

The spirit and the 'Breath of Life', entwined with the romantic and sensual rose of faithful love. On a 21" trace chain.

**P58 ►
Pentagram**

Pendant

Quintessential forces of man.



**P365 ▲
Crystal
Pentagram**

Pendant

Austrian crystal-set, magical star of protection. ‡ ♦

**P805 ▲
Red Curse**

Pendant

A powerful Evil Eye amulet to ward-off unmindful, malevolent curses; set with red taxidermal eye.



**P780 ▲
Hand Of Macbeth**

Pendant

Beware the seduction of ultimate power... With black onyx cabochon.

**P183 ▲
Nosferatu's Rest**

Pendant

Encapsulated in a smoke glazed pewter coffin, the Prince is viewed in his matinal retreat.

**P801 ▲
Santiago Cross**

Pendant

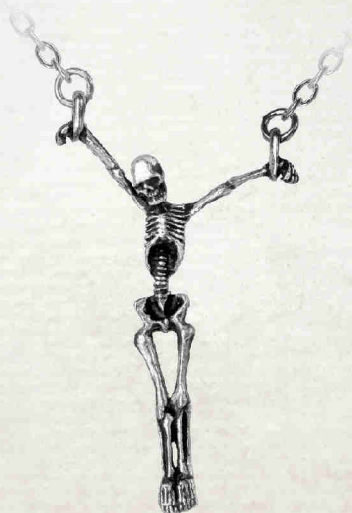
The charge of the 12th century knights, The Order of St. James of the Sword; with hematine cabochon. ‡



P233
Cult Of Aset
Pendant
Translucent red enameled solar disk, horned and throned, of the great Egyptian and universal Goddess.



P26
The Alchemist
Pendant
Classic skull of the philosopher; black rose two-tone pewter.



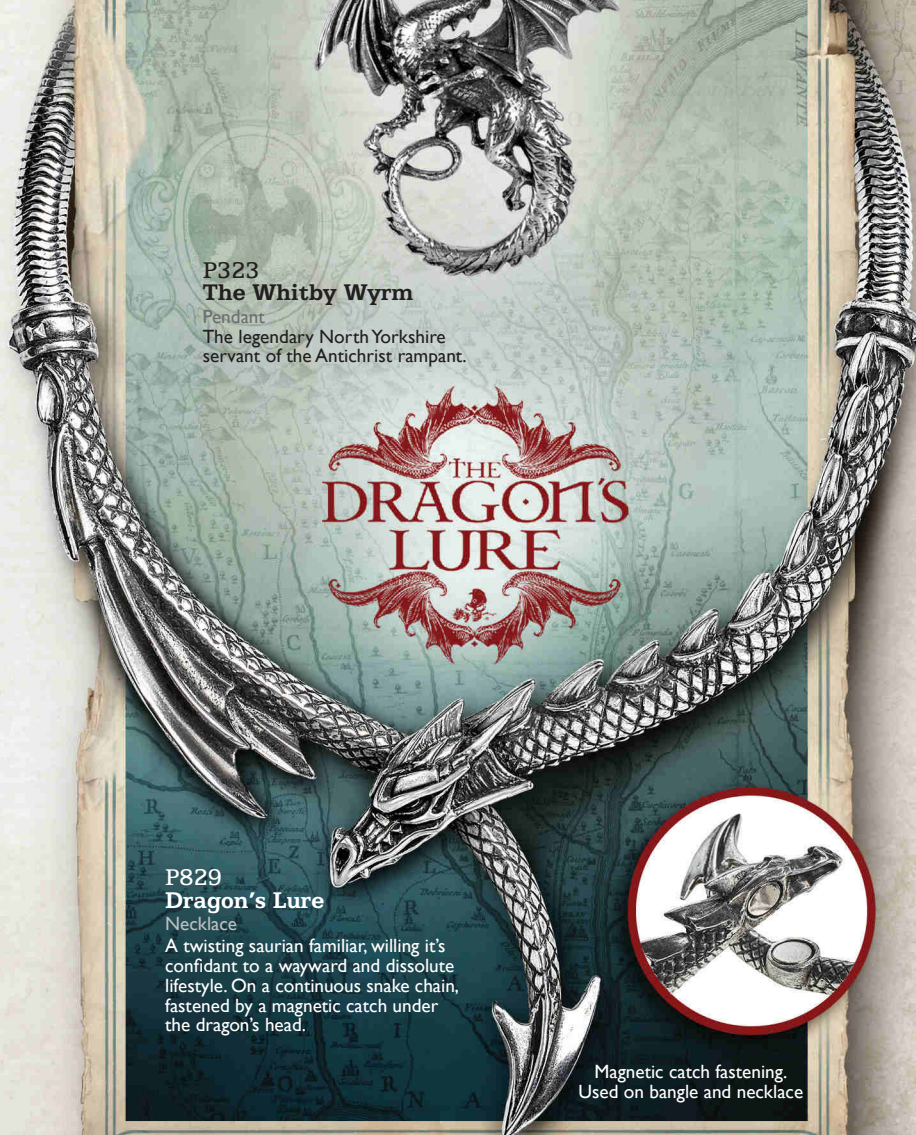
P190
The Lost Soul
Pendant
The pitiful tortured remains of a hapless nobody.



P417
Drakonkreuz
Pendant
Symbol of the obscure, medieval, mystic order and holders of arcane and ancient magical powers; with Austrian crystals. †



P323
The Whitby Wyrn
Pendant
The legendary North Yorkshire servant of the Antichrist rampant.



P829
Dragon's Lure
Necklace
A twisting saurian familiar, willing it's confidant to a wayward and dissolute lifestyle. On a continuous snake chain, fastened by a magnetic catch under the dragon's head.



Magnetic catch fastening. Used on bangle and necklace



**P908 ▲
Mithras**

Pendant

The cult mystery's bull's horns and crescent moon of the Roman underworld.



**P910 ▲
Drakkar Hammer**

Pendant

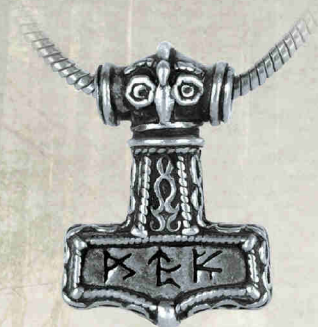
From the great Viking raiding parties' longships.



**P625 ▲
Dragon Skull**

Pendant

Primitive ferocity unleashed.



**P338 ▲
Bindrune Hammer**

Pendant

Viking Thor's Hammer, with runes commanding energy, courage, virility and conquest.



**P774 ▲
Jormungand**

Neck Thong

The Norse legend of Jörmungandr, the 'Midgard' or World Serpent is the greatest ouroboros.



**P728 ▲
Amber Dragon Thorhammer**

Pendant

A classic, ornate and highly intricate pagan amulet of power and protection, fit for a high ranking Saxon or Viking leader, set with polished, translucent, 30 million year old amber. On a 21" trace chain. ‡



**P788 ▲
Wolf Macht**

Pendant

The symbol of power from the wolf's fang is understood by all. With black pewter 'tooth'.



**P833 ▲
Dark Wolf**

Pendant

The ferocity emanated by this feral beast is tangible. Antique pewter pendant on a black curb chain.



**P11 ▲
Double Axe**

Pendant

Barbarian warlord's professional trade tool.



VAP2 ▲
Mjollnir
 Pendant
 Thor's magical war-hammer.



P687 ▲
Helm Of Awe
Ravenskull
 Neck Thong
 This raven's skull has been engraved upon its head with the Icelandic stave symbol, 'Aegishjalmur'.
 On black square leather thong.



P696 ▲
Thor's
Hammer Amulet
 Pendant
 An amulet to Thor, to wear for protection, strength, healing and fertility. On 18" chain.



Model is wearing -
 P774 Jormungand neck thong
 ABR5 Norsebraid beard & hair beads

Model: **Thorben**
 @her_brother_thorben
 Photo: **Silver Pearl Photography**



**P850
Einardolk**

Pendant

Viking talisman of self preservation.
Two-tone pewter with black
cabochon 'eye', on black curb chain.



**P893
Niu Heimar Vegvisir**

Pendant

The Nordic stave wayfinder for the
9 Realms of Asgard, the Viking World.
With etched bronze stave insert.

Model is wearing -
P850 Einardolk pendant
Model: **Dark Wolf**
@Dark.Wolf.Model
Photo: **Les Songes De Lilou**
@Les.Songes.De.Lilou



P875
Aegishjalmur

Pendant

The Viking rune stave, a powerful, magical, Norse protection amulet.



P898
Volvan
Ravenskull

Pendant

The morbid media of a Seidr, the wand-carrier or seer of the Vikings, consulted on matters of fertility and battle, even by the gods themselves.



P617
Black Knight's Cross

Pendant

Awarded for dastardly deeds; with trans black enamel, on black curb chain.



P775
Black Star

Pendant

Supernatural forces leech from the Stygian pentacle; with black enamel.



P730
Bushido

Pendant

The seven virtues of the Samurai warrior, engraved down the length of the Katana's blade.



P618
Osbourne's Cross

Pendant

Sign of a priest of darkness; with black enamel.



ULP9
Tattoo Gun

Pendant

Fully 3-dimensional 2-tone tattoo gun. With engraved, copper-plated scroll on antique silver finish chain.



P296
Reaper's Arms

Pendant

Harvester of Sorrow and the badge of fate.



Model is wearing -

P792 Affaire du Coeur pendant

E414 Affaire du Coeur earring droppers

Model: Mahafsoun

facebook.com/MahafsounArt

EARRINGS



E414 Affaire du Coeur

Dropper Earrings (pair)

The flanking skulls betray a dark

and Delphic romance. ‡ ✦

With translucent deep blue enamel
& Austrian jet crystals.



E437B



E437R

E437C Empyrean Tear

Dropper Earrings (pair)

Tears of grief from the eye
of God, shed for humanity
as He looks down upon us
from the Heavens.

Available in Crystal AB (E437C),
Jet (E437B) or Siam (E437R)

Austrian crystals. ‡ ✦



**E443
Blacksoul Droppers**
Dropper Earrings (pair)
The black demon heart of a gothic seductress.



**E440
Jormungand**
Dropper Earrings (pair)
The discreetly talismanic ouroboris, emblems of wholeness, formed of the legendary Norse Midgard Serpent.



**E442
Flight of Airus**
Dropper Earrings (pair)
The distant shape of a profound wonder.



**E441
Tercia Serpent**
Dropper Earrings (pair)
Symbolising the wiccan rule of three. ‡ ♦



**E425
Love Bats**
Dropper Earrings (pair)
Gothic amour from the night time's darkest creatures. ‡ ♦



**E433
Witches Heart**
Stud Earrings (pair)
Stick the heart and cast a spell for silent retribution. With chained pin.



**E431
Sterne Leben**
Dropper Earrings (pair)
Stars of Life in gothic form, to shine in celestial darkness. With Austrian Jet crystals. ‡ ♦



**E432
RIP Rose**
Dropper Earrings (pair)
Dark and deadly passion from beyond the grave.



**E430
Goddess**
Dropper Earrings (pair)
The Triple Goddess of Wicca is represented with the elemental, full moon pentagram at its heart.



**E421
The Romance Of
The Black Rose**
Dropper Earrings (pair)
An impossible dream...



**E429
Kiss The Night**
Dropper Earrings (pair)
Silent nocturnal sentinels, ever present at your side.



**E428
Emerald Venom**
Dropper Earrings (pair)
The predatory pair, poised to sink their fangs. ‡ ♦



**E409
Kraken**

Stud Earrings (pair)
The monster's writhing tentacle holds its exotically subterranean gem. With volcano effect Austrian dropper. ‡ ♦



**ULFE22
Devil Heart**

Stud Earrings (pair)
Love, is sinful, naughty and oh, so much fun! With translucent red enameled heart & Austrian crystal highlights. ‡ ♦



**E378
Hand Of Macbeth**

Dropper Earrings (pair)
Beware the seduction of ultimate power...With Austrian jet hematite crystals. ‡ ♦



**E333
Black Raven**

Dropper Earrings (pair)
Dark and sultry companions make sure your admirers do not underestimate your character.



**E364
Deadskull**

Dropper Earrings (pair)
The desiccated remains of a former human being; pewter skulls suspended by fine chain.



**E365
Wounded Love**

Stud Earrings (pair)
A gaping hole is left where there was once a dark and mysterious romance; black pewter rose stud with heart dropper.



**E9
Skeleton**

Dropper Earrings (pair)
It all comes down to this. The last remains of master and slave alike.



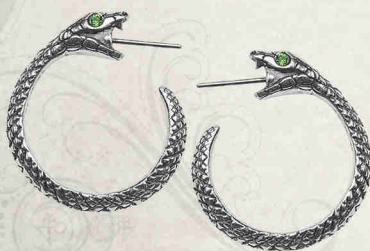
**E373
Awaiting
The Eventide**

Dropper Earrings (pair)
Roosting vamps, silent and motionless, await the final vestige of light - so, the raptors may play...



**E372
Ankh Of Osiris**

Dropper Earrings (pair)
The Egyptian god Osiris, bequeaths the 'Breath Of Life' upon those to be blessed with immortality. ‡ ♦



**E403
The Sophia Serpent**

Stud Earrings (pair)
The Ouroboros, ancient Gnostic symbol of eternity, rebirth and unity. Set with Austrian crystal eyes. ‡ ♦



**E310
Marie Antoinette**

Stud Earrings (pair)
Miniature guillotine blades, bearing the last traces of aristocratic life; with Austrian Siam crystals. ‡ ♦



E402
Ruah Vered
 Dropper Earrings (pair)
 The spirit and the 'Breath of Life',
 entwined with the romantic and
 sensual rose of faithful love.



E396
Ouija Planchette
 Stud Earrings (pair)
 The spiritualist's device for
 communicating with the dead...
 ICU! Set with a realistic
 taxidermal eye.



E395
Black Star
 Dropper Earrings (pair)
 Supernatural forces leech
 from the Stygian pentacle.



Model is wearing -
E395 Black Star dropper earrings
P715 Ruah Vered pendant
P775 Black Star pendant

Model : **Obsidian Kerttu**
facebook.com/ObsidianKerttuOfficial/
 Photo : **Nevena Mitrovic**
instagram.com/nena.mit/

EAR-WRAPS



E274R

The Dragon's Lure

Faux Stretcher Ear-Wrap (right)

Like a whispering shoulder devil, or a witch's familiar, this dragon, piercing through the earlobe, tempts the wearer into acts of shameful depravity.

Model is wearing :

E274R Dragon's Lure ear wrap

P829 Dragon's Lure necklace

A124 Dragon's Lure hinged bangle

Model : **Mahafsoun**

facebook.com/MahafsounArt

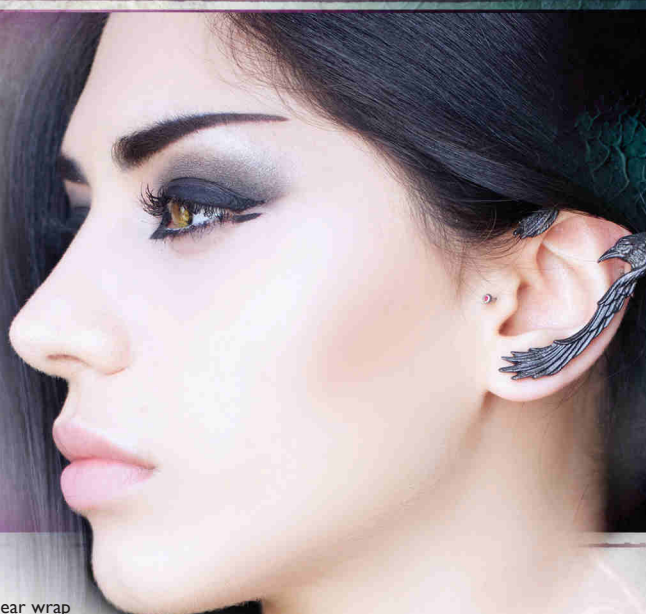
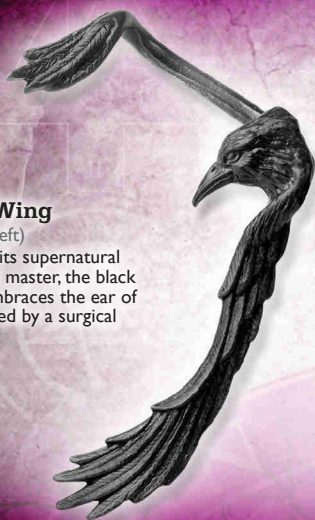
ALCHEMY

 England • 1977

**E355
Raven Ear-Wing**

Stud Ear-Wrap (left)

Ready to impart its supernatural intelligence to its master, the black raven raffishly embraces the ear of its owner. Fastened by a surgical steel ear-post.



Model is wearing :
E355 Raven Ear-Wing ear wrap
Model : **Mahafsoun**
[facebook.com/MahafsounArt](https://www.facebook.com/MahafsounArt)



**E361
Osberg Dragon**

Stud Ear-Wrap (left)

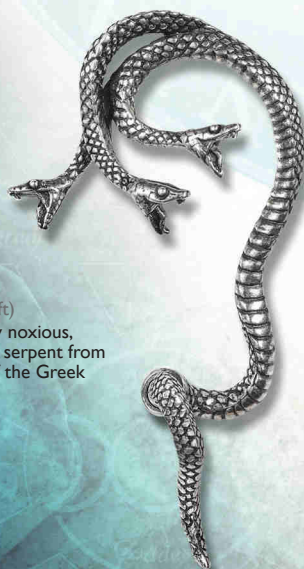
Inspired by the intricate, Norse Art wood carving decorating the great 9th century Viking ship, discovered beneath a burial mound in Norway.



**E436
Jormungand**

Ear-Wrap (left)

The Norse legend of Jörmungandr, the 'Midgard' or World Serpent is the greatest ouroboros... unfurled.



**E434
Khthonis**

Ear-Wrap (left)

A particularly noxious, multi-headed serpent from the realms of the Greek underworld.

**E410
Wild Black Rose**

Stud Ear-Wrap (left)

The rose of black romance will entrap its hearts desire and seduce them. With large black acrylic rose.





**E376 ▲
A Night With Goethe**

Stud Ear-Wrap (left)

Nocturnal stirrings, returning from the grave in search of a lost lover, the creature roams.



**E330 ►
Crystal Dragon**

Faux Stretcher Ear-Wrap (right)

With dramatically outstretched wings, the writhing dragon flaunts its Austrian crystal dropper. ‡

**E412 ▼
Ostrogoth Dragon**

Stud Ear-Wrap (right)

The saw-backed, spine-faced 'raptilion', a long feared monster of dark legend.



Model is wearing -

E412 Ostrogoth Dragon ear wrap
P832 Eye Of The Dragon necklace

Model : **Elisanth** - www.elisanth.com

Photo : **Zatsepin Alex** - www.zatsepin-alex.com

46

KODAK VHS 6006



ARBOREUS ELF EAR WRAPS

◀ E390R & E390L Arboreus

Stud Ear-Wrap (right & left)
An elf's ear of swirling Victorian,
verdant flourishes. Available in
both right & left ear versions.

Model is wearing : E390R Arboreus Ear Wrap

Model : **Melanie K**

instagram.com/frankensteins_cat/

Photo : **Travis Lilley**

instagram.com/travislilleyphoto/



E446 ELVYN ELF EAR WRAPS

The quintessential manifestation of one
of the most magical and ancient of beings.
‡ ♦

E446 R
Black
Ear-Wrap
Right

E446 L
Black
Ear-Wrap
Left



THE DRAGON'S LURE

1 E274R The Dragon's Lure

Faux Stretcher Ear-Wrap (right)
Like a whispering shoulder devil,
or a witch's familiar, this dragon,
piercing through the earlobe,
tempts the wearer into acts of
shameful depravity.

2 E274B Dragon's Lure Black

Faux Stretcher Ear-Wrap (right)
Noir version of the now
immortal dragon wrap.

3 E274L Dragon's Lure Left

Faux Stretcher Ear-Wrap (left)
A matching, left-ear version
of the infamous dragon
wrap.



E381 ▼
Thor Donner
 Cuff Stud Earring (single)
 A Norsemen's miniature
 Thor's hammer and 'thunder'
 rune-cuff.



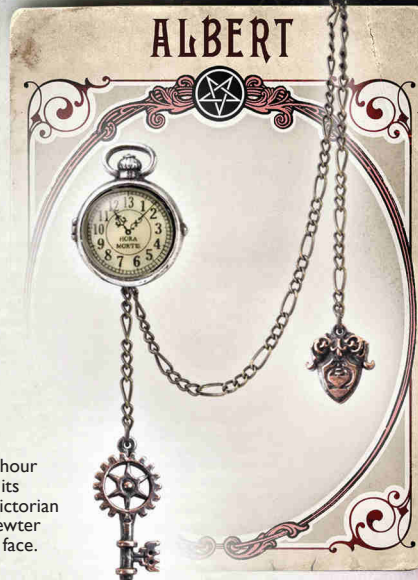
CUFF STUDS



E382
Rosa Nocta
 Cuff Stud Earring (single)
 Conjuring the amorous
 magical properties of a
 combined pentagram and
 a black rose.

E349 ►
**Uncle Albert's
 Timepiece**

Cuff Stud Earring (single)
 The perfect miniature, 13-hour
 Lunar time fob watch and its
 accoutrements from the Victorian
 era; two-tone copper & pewter
 with glass imitation watch face.



FAUX EAR STRETCHERS



E280 ▲
Impalare Cross
 Faux Stretcher (single)
 Pierced by the enduring symbol
 of sacrifice; black-enamelled
 cross piercing the earlobe, with
 surgical steel post.



E320 ▲
Tomb Skull Horn
 Faux Stretcher (single)
 7mm curved horn with plain
 skull end.



E257 ▲
Cesare's Veto
 Faux Stretcher (single)
 The Cesare Borgia's Florentine
 solution to all political problems.
 With Austrian crystal. ‡

SINGLE EARRINGS

E256
Hang Man's Noose
 Single Stud Earring
 The most squalid and degrading
 of ends to the life of a mortal.



E357 ►
Bushido
 Single Dropper
 The seven virtues of the samurai
 warrior, engraved down the
 length of the katana's blade.



STUD PAIRS



**E447 ▲
Ring O' Roses**
Stud Earrings (pair)
Symbolising a dark
and mysterious love.



**E444 ▼
Blacksoul Studs**
Earrings Studs (pair)



The black demon heart
of a gothic seductress.



**E342 ▲
Mortuarium**
Stud Earrings (pair)
Skulls, staring deeply into the
oblivion of a long-past mortal
existence.



**E394 ▲
Viennese Nights**
Stud Earrings (pair)
Creatures of the night in Europe's
fabulous den of iniquity. ‡ ♦



**▲ E422
Demoneye**
Stud Earrings (pair)
The creature from which
these ocular sensors belong
is not to be crossed.



**E401 ▲
Triple Goddess**
Stud Earrings (pair)
The pearly full moon, invoking
healing, occult protection and wealth. ‡



**E353 ▲
Industrilobe**
Stud Earrings (Pair)
The quintessential cogwheel,
personifying dynamic industrial
and intellectual progress.



**E164 ▲
Pentagram Studs**
Stud Earrings (pair)
Miniature pentagrams for
magical discretion.



**E339 ▲
Black Rose Studs**
Stud Earrings (pair)
The alchemical mystery personified
by this impossibly rare flower.



**E186 ▲
Batstuds**
Stud Earrings (pair)
Discreet aural accents
for the nocturnal hunter.



**E359 ▲
Rabeschadel**
Stud Earrings (pair)
The great black bird, famous
for its prophetic powers, being
Odin's messengers and capable
of foretelling death.



**E384 ▲
Thor Hammer Studs**
Stud Earrings (pair)
A Norseman jewel-smith's
precision, miniature Thor's
hammer.



**E406 ▲
Sacred Cat**
Stud Earrings (pair)
A likeness of the Egyptian black
cat warrior and protectress. ‡ ♦



**E76 ▲
Death Studs**
Stud Earrings (pair)
Miniature pewter skull studs,
for the discreet fatalist.



**R239
Baphomet**

Ring

Inspired by Éliphas Lévi's portrait of the goat-headed deity, and the reason for the Knights Templar's downfall.
(Sizes : N, Q, T, W, Y)



**R240
Blacksoul**

Ring

The black demon heart of a gothic seductress.
(Sizes : L, N, Q, T, W)



**R234
Goddess**

Ring

The Triple Goddess of Wicca is represented with the elemental full moon pentagram at its heart.
(Sizes : L, N, Q, T)



**R235
RIP Rose**

Ring

Dark and deadly passion from beyond the grave.
(Sizes : L, N, Q, T)



**R236
Voodoo Doll**

Ring

The traditional Folk Magic method of destroying a witch's power, or cursing a rancorous foe. With chained removable pin. (Sizes : N, Q, T, W)



**R237
Token Of Love**

Ring

A dark and mystical love stays hidden within this token ring.
(Sizes : L, N, Q, T)



**R238
Little Devil**

Ring

The heart of The Devil, to signify your love of the wicked! The red enamel heart is bounded by a pair of Austrian crystals. (Sizes : L, N, Q, T) ‡



**R222
Ravenette**

Ring

The darkened quietude of sorrow. (Sizes : L, N, Q, T)



**R228
Psalm 68**

Ring

"Let God arise and His enemies be scattered"; the serpent of the underworld. Set with Emerald Austrian teardrop crystal.
Adjustable Sizes:
L - N, (Small), Q - T, (Med) ‡



**R223
Bacchanal Rose**

Ring

A romantic motif concealing a secret libertine passion. Set with two Austrian crystals and black acrylic rose.
(Sizes : L, N, Q, T) ‡



**R216
Stealth**

Ring

Under the cloak of night, the bat crawls towards its intended prey.
(Sizes : N, Q, T, W, Y)



**R224
Bastet Goddess**

Ring

The perfect feline fantasy; the Egyptian cat warrior goddess of sexuality and the moon. With Austrian crystal eyes.
(Sizes : L, N, Q, T) ‡



**R222
Emerald Venom**

Ring

The deadly predator is quiescent, poised to strike when it may sate its desire. With Austrian Olivine crystal body. (Sizes : L, N, Q, T) ‡



**R219
Triple Goddess**

Ring

The pearly full moon between waxing and waning crescents, invoking healing, occult protection and wealth. With mother-of-pearl cabochon. (Sizes : L, N, Q, T) ‡

RINGS



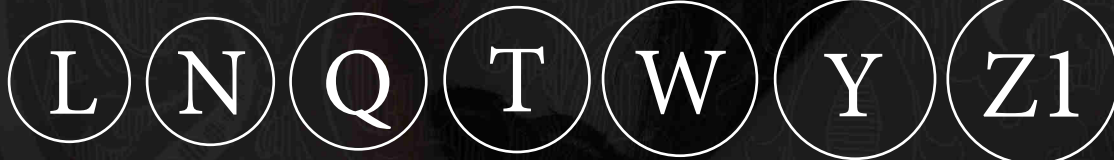
INTERNATIONAL SIZE GUIDE

English:	L	N	Q	T	W	Y	Z1
American:	6	7	8½	9½	11	12	13
European:	12	15	18½	21	23	27	28
German:	1.7	1.8	1.9	2.0	2.1	2.2	2.3
Japanese:	10	13	16	19	23	25	27

Alchemy's rings are available in various sizes. The sizes stated are intended as a guide only, and are **NOT** always strictly accurate.

DIAMETER RING GAUGE

To gauge your ring size using the circular guide, place a suitably sized existing ring over the size indicators here and choose the closest size to the inner circle.



LINEAR RING GAUGE

To gauge your ring size using the linear guide, wrap a 5mm wide X 10cm long (approx.) strip of paper around the required finger and mark the point of overlap with a pencil. Then lay flat against this linear guide.

Z1YW T Q NL



Linear Ring Gauge

ALCHEMY
England • 1971

Model is wearing -

R219 Triple Goddess ring

R223 Bacchanal Rose ring

P823 Nocte Amor choker

Model: **Dragonfly**

[facebook.com/GuiDragonfly](https://www.facebook.com/GuiDragonfly)

R209
Sub Rosa Poison Ring
Poison Ring



Beneath the rose, (a symbol of secrecy), there may lie a fatal draught of toxin; with hinged lid to secret compartment & Austrian crystals.
(Size: L) ‡



R210
Claddagh By Night

Ring
Love, Friendship and Loyalty vouchsafed from the underworld; with Siam Austrian heart crystal.
(Sizes: L, N, Q, T) ‡



R221
Kraken

Ring
Evil from the deep, tightening its grip about your finger.
(Sizes: N, Q, T, W)



R6
Death Ring

Ring
The famous blank, stark expression of the face of death.
(Sizes: N, Q, T, W, Y)



R215
Ouija Eye

Ring
Seeing into the past, the present and the future with the unsettling guidance of the spirit board.
(Sizes: Q, T, W)



R173
Runeband

Ring
Nordic runes recite the mantra, 'Poetry is in Battle'.
(Sizes: Q, T, W, Y, Z)



R195
Viking Virility Runer

Ring
The two bindrunes are made from Uruz and Teiwaz, for the fighting strength of a warrior; and Inguz and Gebu for a virile union and partnership. (Sizes: Q, T, W, Y)



R71
Agla

Ring
Five magical talismans of profit and protection. The central Kabbalistic sigillum "Agla", stands for 'Thou art mighty forever O Lord', with the remaining four seals for love, memory, safety and peace. (Sizes: N, Q, T, W)



R220
Rabeschadel Kleiner

Ring
The sinister black bird, famous as Odin's messengers and for their prophetic powers and foretelling death.
(Sizes: L, N, Q, T, W, Y)



R183
Vis Viva

Ring
The living power; overwhelming energy and the force of life encircles and liberates the wearer; with Austrian crystals. ‡
Adjustable Sizes: Small (L - N), Med (Q - T) & Large (W - Y)



R206
The Sophia Serpent

Ring
The Ouroboros, ancient Gnostic symbol of eternity, rebirth and the unity of everything, representing the sun and soul of the world.
(Sizes: L, N, Q, T, W, Y) ‡



R212
Demon Black & Angel White

Promise Ring

On each ring are inscribed seven magical signatures; one of angels, the other of 'demons'. Summon the assistance of the spirits!

Unique split ring in contrasting light & dark finishes. (Sizes: N, Q, T, W)



R134
Betrothal

Ring

A miniature rococo masterpiece of romantic metaphor, with the blood red enamelled heart of passion. (Sizes: L, N, Q, T)



Model is wearing -
R212 Demon Black & Angel White
double ring
R209 Sub Rosa Poison ring
Model : **Mahafsoun**
[facebook.com/MahafsounArt](https://www.facebook.com/MahafsounArt)

ARMWEAR



A138 ▲ Baphomet

Wrist-Strap

Éliphas Lévi's portrait of the goat-headed deity, and the reason for the Knights Templar's downfall. On adjustable leather strap.



◀ A102 Gears of Aiwass

Wriststrap

Aleister Crowley's incorporeal intelligence and dictator of his transcribed and ultra-complex, sacred text, 'The Book of the Law'. On adjustable leather strap.



A98 ▲ Thunderhammer

Wriststrap

The Norse god Thor's mighty weapon of utter destruction, Mjolnir. On adjustable leather strap.

◀ ULA1 Ace Of Dead Spades

Wriststrap

Italian leather wriststrap with pewter & black-enamelled ace of spades plate, including raised, sculpted death's head. On adjustable leather strap.



**A109 ►
Black
Consort**
Wriststrap

The majestic raven, wings outstretched, gliding alongside its adopted squire offering protection and guidance.

On adjustable leather strap.



**A105 ▲
Rabeschadel Wriststrap**
Wriststrap

The great black bird is famous for its prophetic powers, being Odin's messengers and capable of foretelling death.

On adjustable leather strap.



Model is wearing -
R220 Rabeschadel Kleiner ring
A109 Black Consort wriststrap

Model : **Mahafsoun**
facebook.com/MahafsounArt

**A111 ▲►
Desmodus**
Wriststrap

The metaphor to capture that dark and dangerous creature that stalks the night. One size Adj.



**A103 ▶
No Man's Land**

Wrist Chain

Emerging from the bottomless mud and gore of the fields of Passchendaele, the ruins of humanity and war blossom. Sizes: Small & Large.



**A78
Elizabethan**

Bangle

Robert Dudley's original design for the tracery molding above the North entrance to Kenilworth Castle for his great love, alas, never used; with Austrian crystal hearts.

One size Adj. * ‡ ♦



**A135 ▲
Worshipping Bastet**

Bracelet

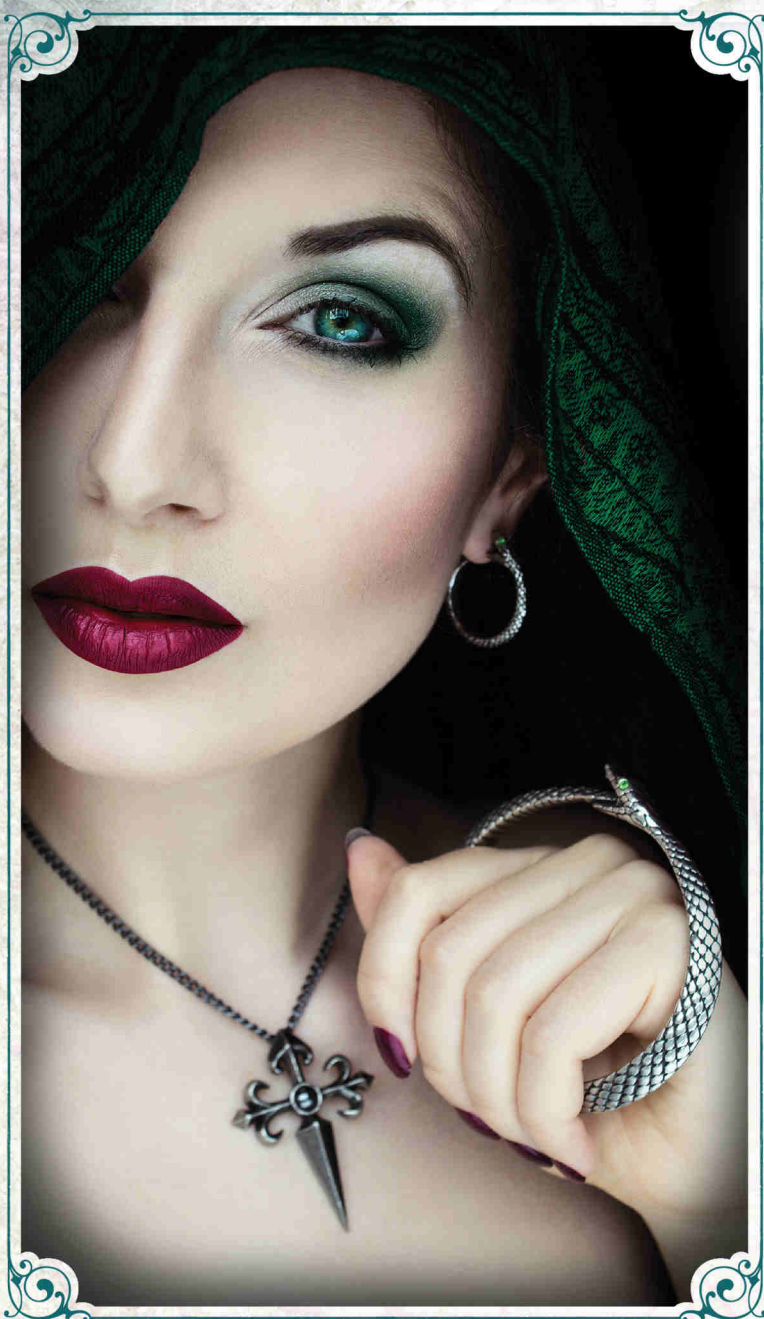
A triple goddess shrine to the Egyptian warrior cat and protectress, bringer of joy and goddess of sexuality. With Austrian Siam crystal eyes. ‡ ♦



Model is wearing -
A135 Worshipping Bastet bracelet
R224 Bastet Goddess ring

Model: **Dragonfly**
facebook.com/GuiDragonfly

* **CAUTION:** Repeated over-bending of bangles will cause metal to fracture.



Model is wearing -
E403 The Sophia Serpent earrings
P801 Santiago Cross pendant
A121 The Sophia Serpent bangle

Model : **La Esmeralda**
 @Alternative.Model.La.Esmeralda

Photo : **Silver Pearl Photography**
www.silverpearlphotography.blogspot.com



A121
The Sophia Serpent

Bracelet

The Ouroboros, ancient Gnostic symbol of eternity, rebirth and the unity of everything, representing the sun and soul of the world.
 Sizes Small & Large. ‡



A125
Wild Black Rose

Hinged Bracelet

A trinity of jet-coloured blooms - a portent of love from the shadows.
 With magnetic fastening & safety chain. Sizes: S/M & M/L.



A29
Vertebrae

Hinged Bangle

The metallised spine of a vanquished predator, forms this hinged, articulated bangle; with safety chain. Size: Medium Adj.



A124
Dragon's Lure

Hinged Bangle

The lacertilian seducer wraps around your wrist to impel a new direction upon your will. A hinged bracelet securely fastened with a magnetic catch and a brass safety chain.

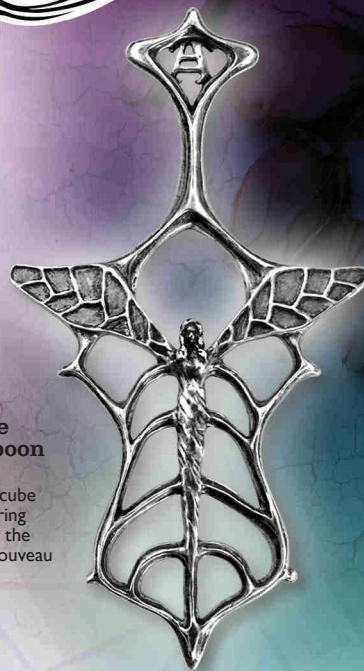
Size: Small (approx 7", 178mm inner circumference)

ACCESSORIES



SB1 ▲ Skull Logo Shopping Bag

Shopping Bag
Fold-up shopping bag featuring repeating Alchemist skull design. Supplied in a small carrying pouch with stud fastening and belt clip for easy storage.



ACWT4 ► La Fée Verte Absinthe Spoon

Absinthe Spoon
Traditional sugar cube strainer for watering down absinthe; in the form of an Art Nouveau fairy.



▲ ROSE1 Black Rose

Rose
Convincing, artificial symbol of perfection and tragic love.



ROSE8 ► Black Rose Spray

Roses
The iconic Alchemy Black Rose has blossomed into a collection of stunning flowers to adorn your crypt or boudoir.

HAIR ACCESSORIES



▲ **ABR1
Funereal Beard
& Hair Beads**
Beard / Hair beads (Set of 3)

Essential regalia for the well appointed mute and pagan mourner. Set of 3 includes Janus Skull, Coffin & Alchemist Skull.



▲ **ABR5
Norsebraid Beard
& Hair Beads**
Beard / Hair beads (Set of 3)

The complete Viking warrior's amuletic tool kit, to incite a berserker's invincibility. Set of 3 includes Thor's Hammer, Raven's Skull and Viking Warrior's Helmet.



**HH1
Darkling
Bat Slide**

Hair Slide

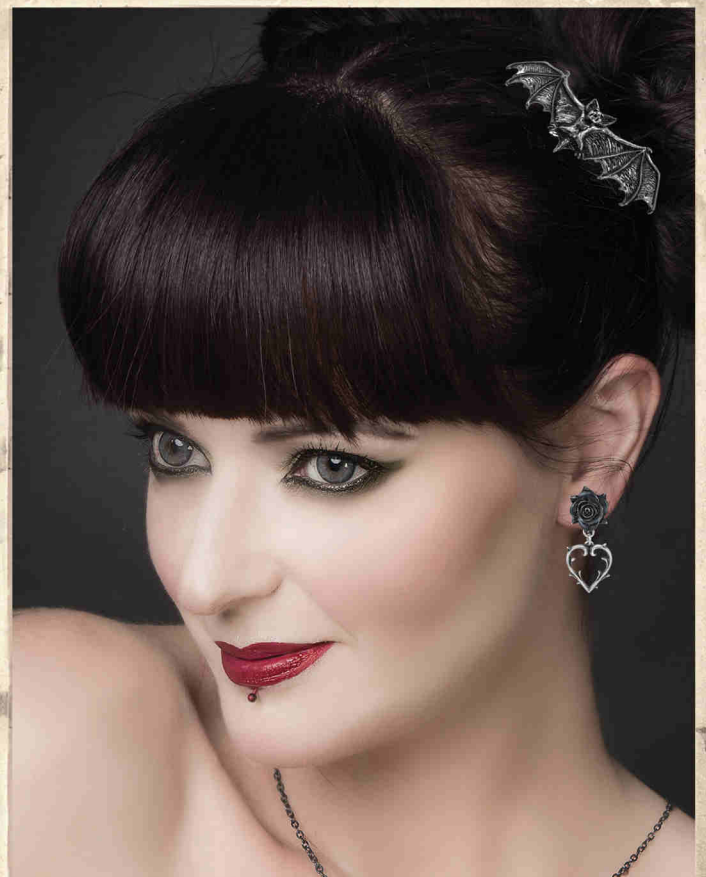
The classic vampiric bat swoops spreadeagled towards it's prey.



**HH10
Black Raven Hair Slide**

Hair Slide

The Raven - the modern vampire and 20th century symbol of the undead; in blackened pewter.



Model is wearing :
HH1 Darkling Bat hair slide
E365 Wounded Love earrings.

Model : **Dragonfly**
facebook.com/GuiDragonfly

CANDLESTICKS

V115
Ulula Noctis
Candlestick



V114▶
Vespertilio
Bat Candlestick

Silent sentinel delighting in night. Flying on the border between one world and the next. Be it bird or beast at dusk or dawn, forever unseen at the dark of the moon.

◀V115
Ulula Noctis
Wolf Candlestick

A true child of moonlight calls out it's wild rhapsody of darkness. Summoning its kind in the forest of night, where the prey is elusive and the hunt never ends.

V114
Vespertilio
Candlestick



V109
Poe's Raven
Raven Candlestick

The cry of "Nevermore" cuts through the Stygian gloom, inspiring Edgar Allen Poe to give poetic voice to The Raven and light our way through the dark night of the soul.



V113
Faust's Familiar
Cat Candlestick

Keeping an all seeing vigil at the witching hour with eyes that see beyond the veil, as spirits are invoked to serve an unseen enchanter. Nine times he returns to tell of things yet unknown.



V116
Owl of Astrontiel
Owl Candlestick

Attendant spirit to a dark goddess and silent spectre of the wilderness, bringing gifts of erudition and prophecy to those with an appetite for midnight.



COFFIN CASKETS



V118
Bride of
The Dark Kiss
Casket & Figure



Removable 3D figure
and secret mirror on the
reverse of the coffin lid.

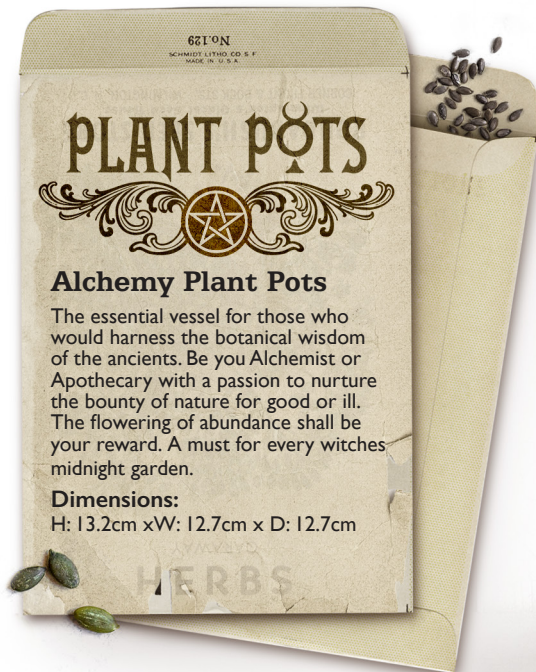


◀V117
Nosferatu's Rest
Casket & Figure
Noble progenitor of the royal bloodline.
The prince of darkness lies supine in the
deathless sleep of eternity. The prophecy
tells he will rise again and the night shall
rejoice.



V117
Nosferatu's Rest
Casket & Figure

▲V118
Bride of The Dark Kiss
Casket & Figure
Untainted by dawn's embrace, the fairest
beauty is shunned by death's long shadow.
Dreaming of sweet blood in the eternal
hibernation of the damned.



GPP6 Witches Spell Garden

Plant Pot

A stunning plant pot featuring the only plants and herbs a true witch will ever need to grow. Thyme, Lavender, Sage, Rosemary, Nightshade, Hemlock, Nettle, Mugwort, Valerian, Mint, Basil, Wolfsbane.



GPP1
Witches
Garden



GPP2
Magic
Garden



GPP3
Catnip



GPP4 Water Don't Torture



GPP5 Wet Your Plants



GPP7 Dead Plant

MUG WARMERS

Light the sacred flame of rituals long past to evoke a purifying warmth that will drive out the demons of discomfort through an incantation and a Witch's brew.

Multi-use mug warmer stands; simply pop a tealight into the base and keep your drinks hot for longer (mug included). Or simply use without the mug as a beautiful tealight holder and see shadows of the dark flicker in your boudoir.

By adding your own crystal ball, will also serve perfectly as a scrying stand for your crystal ball as you divine the ghosts of the futures yet to come!

(2 piece set: Mug warmer stand & Mug).



MWCB2 ▲
Cat
Mug Warmer



MWCB1 ▲
Bat
Mug Warmer



MWCB3 ▲
Cauldron
Mug Warmer



MWCB4 ▲
Skull
Mug Warmer



Shown as T-light holder.



Shown as crystal ball stand.

The Vault™

by Alchemy

Original and official:
Quality resin giftware, designed
by Alchemy Studios, England.



V107 Triple Moon Caludron Pot

Pot / Tea Light Holder

The enchantress Ceridwen's vessel of rebirth, transformation and inspiration. By the power of three, so mote it be.

A beautiful cauldron inspired pot, the perfect place for your trinkets and treasure. Tea light can be used with lid off only.



V109 Poe's Raven

Candle Stick Holder

The cry of "Nevermore" cuts through the Stygian gloom, inspiring Edgar Allen Poe to give poetic voice to The Raven and light our way through the dark night of the soul.



V106 Black Raven Photo Frame

Photo Frame (6x4)

Odin's oracle, wisest of birds and herald of the gods, bearing our whispered oaths to the halls of Valhalla. This black resin photo frame can be free standing or wall hung, accommodates a 6x4" picture or photo.

V112
Lunaeca Tea
Light Holder

Tea Light Holder

Crepuscular apparition, summoned by devotion and conjured in the temple of Artemis at the dark of the moon. The most darkly beautiful bat tea light holder which will cast shadows of the moon phases around your abode.



V111
Cathedric Mirror

Mirror

Look into the cathedral window and see your reflection! This mirror can be wall hung or free standing.



V110
Cathedric Photo Frame

Photo Frame (6x4)

Invoking the gothic heritage of a lost epoch to fill us with awe and foreboding as we behold it's blackened edifice reaching to the heavens.



V105
Black Raven
Mirror

The black raven surrounds a beautiful oval mirror. A totally unique addition to your boudoir. Black resin mirror, can be free standing or wall hung.



Goblets

An impressive trio of goblets to toast your celebratory occasions! The perfect addition to your altar or banqueting table and a show piece for your home. Hand finished in finest resin with a steel cup inlay.

To preserve the life of this goblet you must not dish wash or submerge in water.
Cup can be wiped clean after use. Decorative item only.



VG1
Blood Heart Goblet

Goblet

An Affaire du Coeur - for love shall survive even death. A dark and Delphic romance of the heart between two strange and exotic creatures, affirming a bond that transcends our earthly realm and reaches unto the Elysium fields of eternity.

A stunning hand painted goblet/chalice with skull, heart and vine detail. Inlaid with faux crystals and cabochons representing puddles of blood.

Approx. Height : 18.9cm (7.44")



VG2
Ruah Vered Goblet

Goblet

The elemental star that protects the all-powerful panacea of the black rose, for the pentagram is the fifth element; the spirit and the 'Breath of Life', passionately entwined with the romantic and sensual rose of faithful love to ensure health, harmony and Erosean mystical powers.

A stunning hand painted goblet/chalice with iconic pentagram and black rose decoration.

Approx. Height : 18.9cm (7.44")



VG3
Sacred Cat Goblet

Goblet

Sip from the cup and you may divine the feline prophecies of Ailouros, heart spirit of the temple of Amun. Pray for her blessings, for she is the bringer of music, dance, good fortune, and joy to everyone.

A stunning hand painted chalice/goblet featuring your favourite feline friend!

Approx. Height : 18.9cm (7.44")



Goblets



Model is wearing :

P829 Dragon's Lure necklace

R209 Sub Rosa Poison ring

and holding

VG2 Ruah Vered goblet

Model & Photo : **The Lilitth**

@thelilitth

**V29 ▼
Thor's Hammer
Wall Mount**

Wall Mount

Thor's mighty hammer Mjölñir commanding the primal energy of the storm. Approx. height 21cm.



**V52 ▼
Ravenger**

Wall Mount

The dark and mysterious phantom; afterlife totem of the Elysian Corvid. Approx. width 27cm.



**V46
Dragonlore Clock**

Desk Clock

The spectacular time dragon, sleeps his timeless guard upon an engraved stone that reads 'time, greatest of treasures'. Approx. width 13cm.



**V74
Skull T-Light Holder**

T-Light Holder

Thought shines eternally bright, whilst the ephemeral body withers as fallen fruit in the ground. Approx. height 4cm.



**V16
Corvus Alchemica**

Desk Ornament

A larger than life mythic raven skull, personifying the ancient god of prophecy, ill-omen and lost souls. Approx. length 16cm.



ALCHEMY
England · 1977



1
SA21
Small Black
Rose Heart Frame



3
SA20
Black Rose
Dressing Table Mirror



2
V107
Triple Moon
Cauldron Pot



4
V108
Black Moon
Hand Mirror

1 SA21
**Small Black
Rose Heart Photo Frame**
Photo Frame (3x3)
Tiny black roses form a heart shape
to display a photo of your loved one.
Fits a 3"x 3" photo. Frame can be
free standing or wall hung.

2 V107
**Triple Moon
Cauldron Pot**
Pot / Tea Light Holder
The enchantress Ceridwen's vessel
of rebirth, transformation and
inspiration. By the power of three,
so mote it be.

3 SA20
**Black Rose
Dressing Table Mirror**
Table Mirror
A beautiful addition to your
boudoir and dressing table.
A freestanding resin dressing
table mirror with black rose detail.

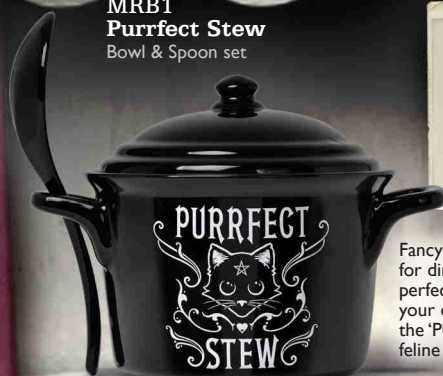
4 V108
**Black Moon
Hand Mirror**
Hand Mirror
Glimpsed through the shroud
of deepest night - The lunar
goddesses dark aspect. Bathing
us in her baleful power.

Alchemy designed, cauldron inspired, lidded bowls, complete with spoon & featuring unique Alchemy artwork. Perfect for soups, broths, cereals and serving snacks.

BOWL AND SPOON SETS

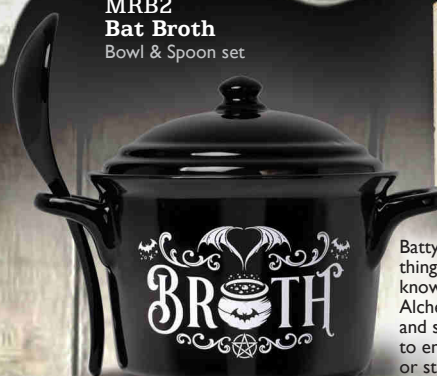
The set comprises of 3 pcs; bowl, lid and spoon all presented in Alchemy branded packaging. The bowl will hold a standard size tin of soup approx. 425ml (14oz). (Suitable for Oven, Microwave and Dishwasher use.)

MRB1
Purrfect Stew
Bowl & Spoon set



Fancy a 'PURRFECT' stew for dinner? Then we have the perfect bowl and spoon set for your dinner table. Or perhaps the 'PURRFECT' gift for that feline loving friend of yours.

MRB2
Bat Broth
Bowl & Spoon set



Batty about bats, food and nice things to put food in? We just know you're going to love this Alchemy 'broth' lidded bowl and spoon set. A fantastic way to enjoy your, broth, soup, cereal or stew!

MRB3
Bone Appetit
Bowl & Spoon set



Feeling 'Dead Hungry'? Enjoy your meal from this unique lidded bowl and spoon set - 'Bone Appetit'!!

MRB5
A Bite To Eat
Bowl & Spoon set



Fancy 'A Bite To Eat'... Would you dare eat from a vampires pot? A unique lidded bowl and spoon set perfect to serve or slurp from!!

MRB6
Witches Secret Recipe
Bowl & Spoon set



Hubble Bubble, what's contained within the witches cauldron? A witches pot for making potions, spells and divine dinners!

MRB7
Feline Hungry
Bowl & Spoon set



A truly unique gift for that feline loving friend of yours. A stunning lidded bowl and spoon set featuring a black cat silhouette and moon design and the words 'Feline Hungry'.



MRB4
So Hungry
Bowl & Spoon set
I'm 'So Hungry' I could eat myself! A fantastical dragon ouroboros features on this unique lidded bowl and spoon set!
Shown with lid removed.



V88
Side detail



V84 ▲
Dragon Heart
Wall or Desk Mirror



V88 ▲
Wiccan Desk Clock
Clock

The sacred triple moon, revered and understood by the ancients, whose unseen rhythms lead the fertility and harvest of the land and sea through the endless cycle of time.



V83 ▲
Dragon Heart

Wall or Desk Picture Frame

Born of brimstone and fire when the world was but a dream of the old gods. Destiny has compelled them to take flight and seek out their one true eternal mate.

V83 Photo - La Esmeralda

**V86 ▼
Triple Moon**

Wall or Desk Photo Frame
Arianrhod's ancient symbol of the waxing, full and waning moon. The goddess as maiden, mother and crone in a cosmic cycle of life and death, reincarnation and rebirth.



V86 Photo - Mahafsoun



V87 Triple Moon

**V87 ▲
Triple Moon**
Wall or Desk Mirror

**V85 ►
Triple Moon**

Trinket Dish / Candle Holder
Hallowed altar to the goddess Cerridwen, cauldron of wisdom and vessel of the sacred flame, watched over by the horned crescents of the virgin and the crone.



V85 Triple Moon



**V91 ▲
Tree of Death**

Dish
The ghost of Cernnunos - the horned king, bereft of his foliate crown. The lord of the dark forest and master of winter, leading the wild hunt with his ancient chant:
"Hoof and horn, hoof and horn:
All who die shall be reborn.
Corn and grain, corn and grain:
All that falls will rise again."



V91 Tree of Death



◀ P873 Pagan Dream
Catcher Necklace

1
V50
Anguistralobe
Desk Clock



2
V15
The Stormgrave
Chronometer
Desk Clock



3
V77
Kraken
Wall or Table
Mirror



4
V57
My Soul From The Shadow
Wall or Table
Picture Frame



**1 V50
Anguistralobe**
Desk Clock
Daedalian C18th instrument which measured the direct path of destiny between specified heavenly bodies. Requires 1 x 1.5v AA battery (not included). Approx. height 13cm.

**2 V15
The Stormgrave Chronometer**
Desk Clock
Professor Stormgrave's patent celestial chronometer, mapping the forces that govern the passing of eternity. Requires 1 x 1.5v AA battery (not included). Approx. height 20cm.

**3 V77
Kraken**
Wall or Table Mirror
The terrifying leviathan who's tentacles writhe up from the abysmal depths of history to drag the unwary soul back into the Lovecraftian under-deeps. Approx. height 23.5cm.

**4 V57
My Soul From The Shadow**
Wall or Table Picture Frame
A spirit raven takes flight to guide a forlorn lover's desperate search for hope after the tragic loss of his beloved. Holds a 6" X 8" picture. Approx. height 23.5cm.

The Vault™ by Alchemy

All Vault items are made of cast and hand finished resin and are featured smaller than actual size.

5
V28
Raven's Ward
T - Light Holder



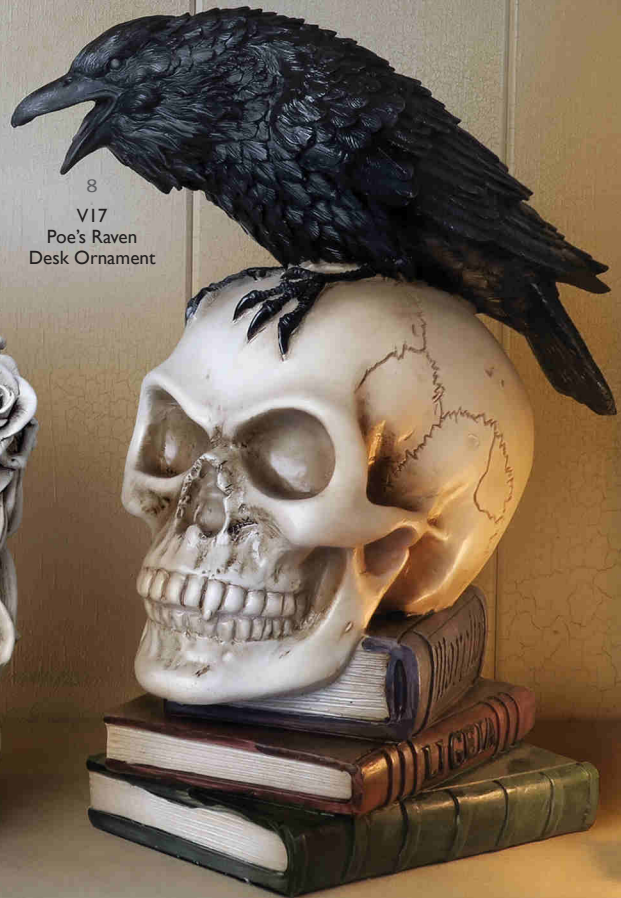
6
V71
Grimalkin's Ghost
Desk Ornament



7
V70
Unicorn
Desk Ornament



8
V17
Poe's Raven
Desk Ornament



5 V28
Raven's Ward
T - Light Holder
T-light Holder

The harbinger of the old gods, illuminating the dark night of the soul. (Candle not included). Approx. height 11cm.

6 V71
Grimalkin's Ghost
Desk Ornament

Feline familiar to the great French prophet and astrologer - Nostradamus, who having outlived his master, carried the seer's arcane wisdom from Paris to London where he eventually fell in with one William Shakespeare. Approx. height 18.5cm.

7 V70
Unicorn
Desk Ornament

The sole survivor of an ancient lineage, who's fellows all perished in the great flood. It's unique horn is said to draw down the power of the moon. Approx. height (with horn removed) 15cm.

8 V17
Poe's Raven
Desk Ornament

Inspiring Edgar Allan Poe, Master of the Macabre to give poetic voice to the Raven, "NEVERMORE". Approx. height 18.5cm.

HAND MIRRORS

The
Vault
by **Alchemy**

All Vault items are made of cast and hand finished resin and are featured smaller than actual size.



V10

Mirror Side

1
V10
Black Angel
Hand Mirror



V64

Mirror Side

2
V64
Sacred Cat
Hand Mirror



V9

Mirror Side

3
V9
Fate Of Narcissus
Hand Mirror



1 V10
Black Angel
Hand Mirror

One of the most alluring of the high order of angels, invoked by the Sigillum Aemeth, Dr. John Dee's scrying stone.
Approx. height 23cm.

2 V64
Sacred Cat
Hand Mirror

Gaze into the glass long enough and you shall divine the feline prophesies of Ailouros, hearth spirit of the temple of Amun.
Approx. height 22.5cm.

3 V9
Fate Of Narcissus
Hand Mirror

Stare long enough into the argent pool and one inescapable destiny shall befall all, be they God or mortal.
Approx. height 18cm.

ALCHEMY
England • 1977

4
V75
Kraken
Hand Mirror

5
V58
Baroque Rose
Hand Mirror

6
V80B
Devil's Heart
Hand Mirror
(Black)

4 V75
Kraken
Hand Mirror

The terrifying leviathan who's tentacles writhe up from the abysmal depths of history to drag the unwary soul back into the Lovecraftian under-deeps.
Approx. height 21cm.

5 V58
Baroque Rose
Hand Mirror

Grown from a thorn of the one true black rose - The obsidian bloom that is the Opus Magnus of the Alchemist
Approx. height 21,5cm.

6 V80B
Devil's Heart Black
Hand Mirror

Saint or Sinner ?
Love, dark passions, and lustful desires are akin to the rapturous reflection that sees all.
Approx. height 23cm.

Model with :

V9 Fate Of Narcissus hand mirror

Model : La Esmeralda
www.facebook.com/Alternative.Model.La.Esmeralda
Photo : Silver Pearl Photography

1 V81
Dragon's Lure

Hand Mirror

Gaze long enough into the Basilisk's ophidian pool and you will perceive an inner darkness that lurks beneath your earthly facade.

2 V82
Vampire's Moon

Hand Mirror

Denizens of midnight take flight on a nocturnal foray to feast on hot blood, before returning to their sanctum on the dark side of the moon.

The
VaultTM
by **Alchemy**



1
V81
Dragon's Lure

V81
Dragon's Lure
Back view

2
V82
Vampire's Moon

V82
Vampire's Moon
Back view

3 V93
Pumpkin Skull Pot

Pot
Ichabod Crane's immortal adversary carved with sigils of power to enhance his dread influence beyond the confines of All Hallows Eve, and spread terror throughout the rest of the year.



Pumpkin Skull Pot
Open view

4 V92
Triple Moon Spell Box

Box
A magical casket dedicated to the three aspects of the moon goddess: maiden, mother and crone. Drawing down the planetary influences of Mercury, Mars, Venus and the Earth beneath our feet, to enhance your spellcraft for good or ill.



Triple Moon Spell Box
Open view

5 V85
Triple Moon

Trinket Dish / Candle Holder
Hallowed altar to the goddess Cerridwen, cauldron of wisdom and vessel of the sacred flame, watched over by the horned crescents of the virgin and the crone.



Triple Moon
Top view

3
V93
Pumpkin Skull Pot

5
V85
Triple Moon

4
V92
Triple Moon Spell Box



**V63
Pentagramatron**

Trinket Dish

The most powerful of supernatural magical talismans, multiplied by it's own sacred number.

Approx. diameter 9cm.



**V62
Anguistralobe**

Trinket Dish

Commemorative dish celebrating the C18th instrument which measured the direct path of destiny between specified heavenly bodies.

Approx. diameter 9cm.

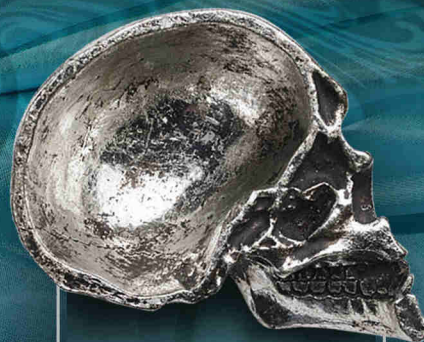


**V61
Vampyr Bat**

Trinket Dish

The torpid revenant awakens to the moon dawn, to quench it's thirst for mortal blood.

Approx. width 8cm.



**V60
Half Skull**

Trinket Dish

Cleaved asunder, the untenanted skull of a once mighty overlord who's sequestered secrets hide within it's fissures.

Approx. width 8.5cm.



1 V78

Sacred Cat

Trinket Box

Place your treasures within the hallowed casket and be assured of the protection of the divine feline presence of Ailouros.

Approx. width 10cm.

2 V59

Pentagram Box

Trinket Box

The Stella Rosarium protects your precious treasures with sacred geometry from Chalisbury Cathedral's Rose Chapel.

Approx. width 16cm.

3 V35

Count Magistus

Money Box

Place your trust in a gentleman who's reputation is beyond reproach (and beyond the grave).

Approx. height 14.5cm.

The Vault
by **Alchemist**

TRINKET BOXES



All Vault items are made of cast and hand finished resin and are featured smaller than actual size.



1
V78
Sacred Cat
Trinket Box



2
V59
Pentagram Box
Trinket Box



3
V35
Count Magistus
Money Box



MAGISTUS

DOMINUS NOCTE



◀V104B
**Skull Moon Box
(Matte Black)**

Trinket Box

The old man in the moon is not always the avuncular gentleman of fairy tales, but the vestige from a time when night's true terror was felt by all.
Approx. height 20.3cm.



◀V104S
**Skull Moon Box
(Silver)**

Trinket Box

Approx. height 20.3cm.

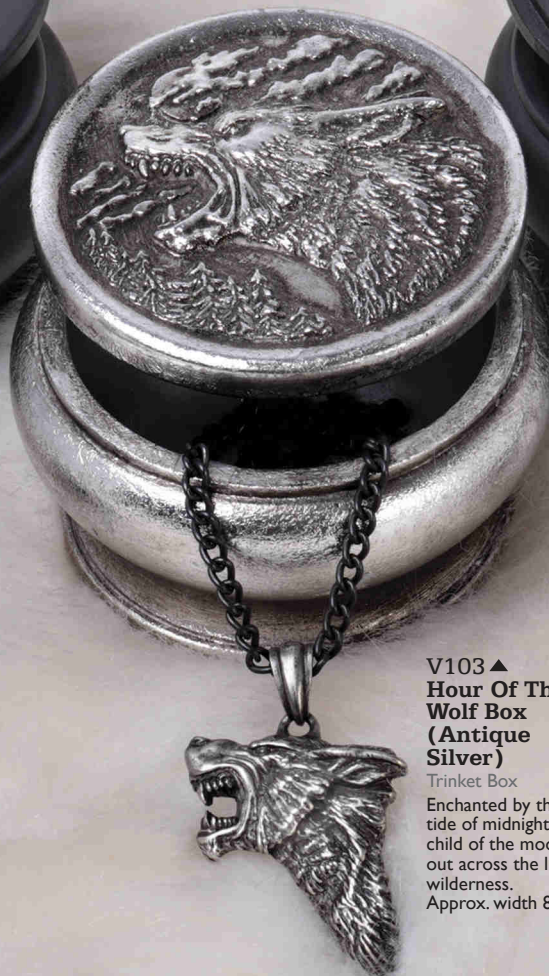
TRINKET BOXES



V101▲
Baphomet Box (Black)

Trinket Box

Set upon a casket bearing an occultists pentagram, the goat-headed deity symbolising the balance in all things is often mistaken for 'the evil one' and was the reason for the downfall of the Knights Templar.
Approx. width 8.5cm.



V103▲
**Hour Of The
Wolf Box
(Antique
Silver)**

Trinket Box

Enchanted by the beckoning tide of midnight. A true child of the moon, calling out across the limitless wilderness.
Approx. width 8.5cm.



V102▲
Vegvisir Box (Black)

Trinket Box

The Nordic stave way finder casket shows the 9 Realms of Asgard, the Viking World. The eight divine worlds that encompass Midgard, the human world, and are named in runic script.
Approx. width 8.5cm.



**V78B▲
Sacred Cat Trinket Box
(Black)**

Trinket Box

Place your treasures within the hallowed casket and be assured of the protection of the divine feline presence of Ailouros. Approx. width 10.5cm.



**V64B▲
Sacred Cat Hand Mirror
(Black)**

Hand Mirror

Gaze into the glass long enough and you shall divine the feline prophesies of Ailouros, hearth spirit of the temple of Amun. Approx. height 22cm.



V64B
Mirror Side



**V90▲
Witches Familiar**

Ornament

The archetypal familiar spirit and witches companion, slumbers in the goddesses circle of power, watched over by the waxing and waning moons. Approx. width 20.5cm.



**◀V100
Black Cat T-Light**

T-Light Holder

Always spare a place at your hearth for a black cat, for they may be the passing emissary of the old gods and bring with them the blessings or wrath of their masters. Approx. height 10.5cm.



**V95
Night Cat Mirror**

Ornamental Mirror

Feline familiar and sentinel spirit of a witches reflection, which is left behind as she travels by moonlight through the astral realm. Approx. height 20cm.

COMPACT MIRRORS

V38
Gothic Heart
Compact Mirror



Front

An exquisitely carved window reflecting the beauty and barbarity of a lost golden age of mediaeval chivalry.

Approx. height 8cm.



Back

V39
Ghost Of Narcissus
Compact Mirror



Front

Glimpse the culmination of your mortal vanity, as you muse upon the futility of worldly endeavours with this secret memento mori.

Approx. height 8cm.



Back

V27
Nevermore
Compact Mirror



Front

Gaze upon your mortal reflection under the scrutiny of Poe's mocking Raven.

Approx. width 9cm.



Back



▲ Model :

R224 Bastet Goddess ring

V64 Sacred Cat hand mirror

Model & Photography : **Joan Wolfie** - @joanwolfie

◀ Model :

V27 Nevermore compact mirror

Model & Photography : **Magda Corvinus** - @magda_corvinus



**V67 ▲
Omega Raven Skull**

Desk Ornament

Inscribed with protective wisdom of arcane cabalistic spells and channeling the influence of Huginn and Muninn, Odin's harbingers of thought and memory. Approx. length 16.5cm.



**V66 ▲
Reliquary Raven**

Ornamental Raven / Necklace

To the followers of Mithras, the raven was a symbol of initiation into the deeper mysteries. A sacred talisman to steady the course and point the way through life's maelstrom. (Leather thong not supplied). Approx. length 6cm.

**V2 ▲
Lapillus Worry Skull**

Pocket Bead

A diminutive yet uncanny skull to comfort and guide a troubled soul. Approx. height 1.5cm.

**V3
Metalised Alchemist Gear Knob**

Gear Knob / Ornamental Skull

The original Philosophus Magus, guiding the traveller to the path of enlightenment. (Bored and fitted with a rubber grommet for self-tap screwing onto gear sticks). Approx. height 4.5cm.

**V41 ►
Metalised Alchemist Skull**

Desk Ornament

A life-sized Alchemist's skull, immortalised in the mercurial lustre of the secret arts. With the traditional golden tooth. Approx. height, 13.5cm.

**V73 ►
Steamhead Skull**

Desk Ornament

Unveiled to her majesty Queen Victoria at the great crystal palace exhibition of 1851. The first punk automaton. Lobotomised to reveal the mechanical consciousness of this unique period phenomena. Approx. height 20cm.



DARK BOUDOIR



**V99S ▶
Raven Skull
Hand Mirror
(Antique Silver)**
Hand Mirror



V99B
Mirror side

**◀V99B
Raven Skull Hand
Mirror (Black)**
Hand Mirror
A raven skull inspired hand mirror
or a unique desk ornament.
Approx. height 15.2 cm.



**◀FLO01
Tulips Bunch**
Tulips
This collection of
convincingly artificial
flowers will add a divine
darkness to your home.



**FLO02 ▶
Black Lily
Bunch**
Lillies

These stunning artificial
flowers are the perfect
way to adorn your
crypt or boudoir.



**V96 ▶
Black Rose Triple
T-Light Holder**
T-Light Holder

A beautiful black rose inspired
T-light holder. The perfect centre
piece for your dining table or
mantel piece.
Approx. height 11 cm,
width 32 cm.



MINIATURES



VM4
Dragon
Keepers Skull



VM2
Unicorn
Resin Miniature
Approx. height 4.5 cm.



VM10
Pumpkin Skull
Resin Miniature
Approx. height 3 cm.



VM5
Demon Skull



VM7
Raven Skull
Resin Miniature
Approx. height 4.2 cm.



VM9
Dragon Skull
Resin Miniature
Approx. height 2.2 cm.



VM6
Alchemist Skull
Resin Miniature
Approx. height 2.5 cm.



VM1
Ram Skull
Resin Miniature
Approx. height 2.5 cm.



VM5
Demon Skull
Resin Miniature
Approx. height 3.1 cm.



VM4
Dragon
Keeper's Skull
Resin Miniature
Approx. height 3.6 cm.



VM3
Cat Skull
Resin Miniature
Approx. height 5.8 cm.

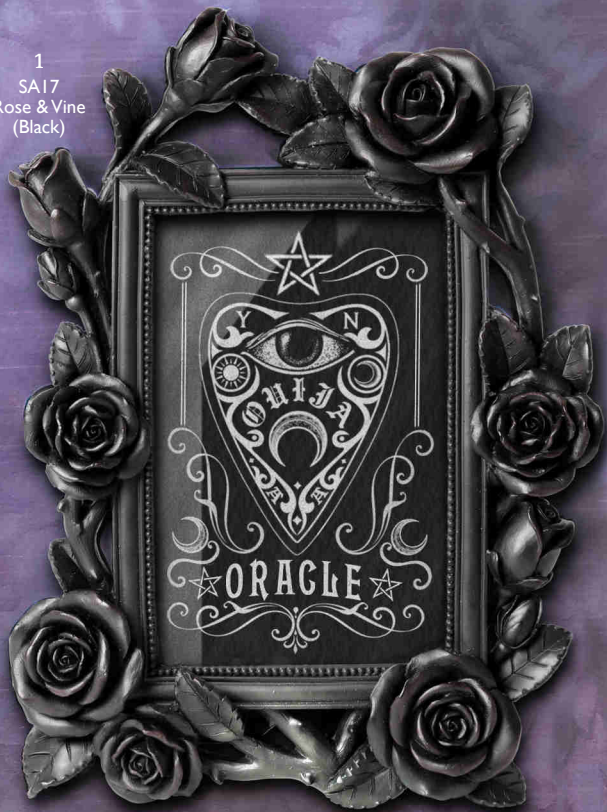


VM8
Steamhead Skull
Resin Miniature
Approx. height 3.9 cm.

These miniature models form part of the sought after high quality resin collection by Alchemy. Each miniature is lovingly made and painted by hand with intricate detail, making them the perfect gift for a loved one or a talisman to treasure! There are 10 extraordinary designs why not collect them all!

(Miniatures are illustrated here larger than actual size. Sizes range between 2.2cm high - 5.8cm.)

1
SA17
Rose & Vine
(Black)

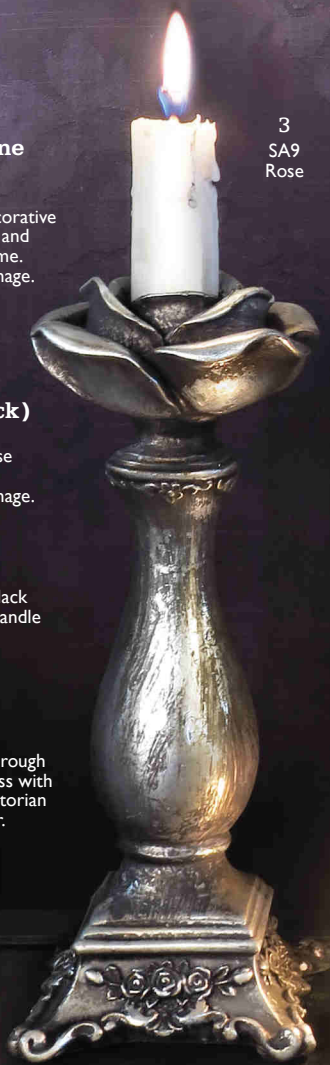


2
SA18
Rose
(Black)



1 SA17
**Rose & Vine
(Black)**
Photo Frame
A beautiful decorative
entwined rose and
vine photo frame.
To fit a 6x4" image.

3
SA9
Rose

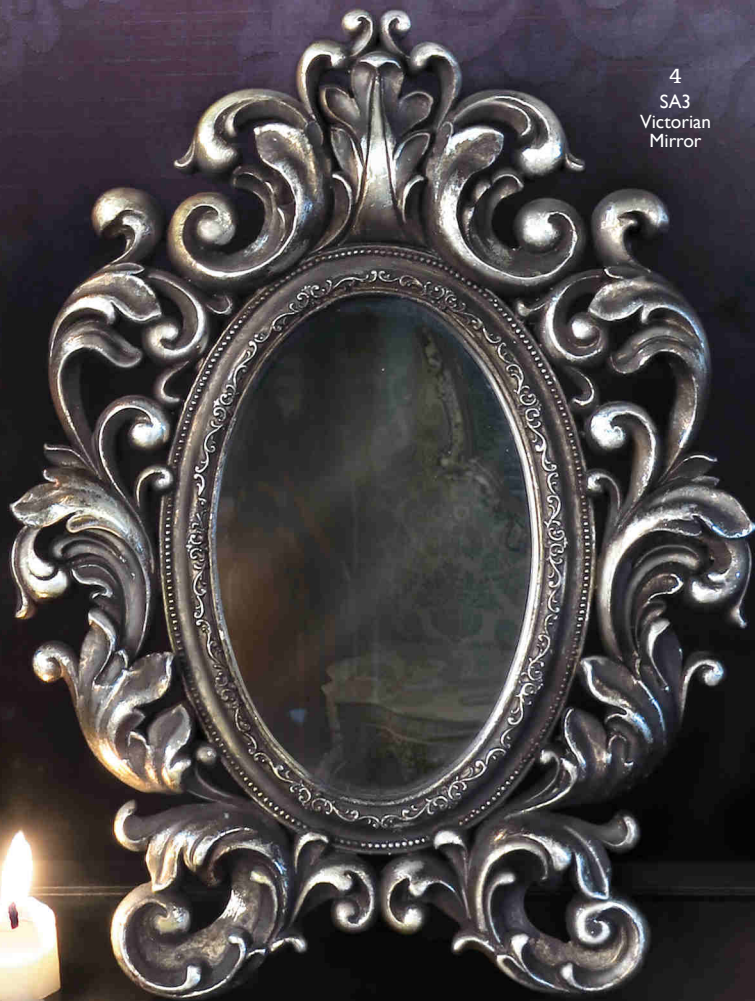


2 SA18
Rose (Black)
Photo Frame
A romantic rose
photo frame.
To fit a 6x4" image.

3 SA9
Rose
Candle Stick
An exquisite black
rose inspired candle
stick.

4 SA3
**Victorian
Mirror**
Mirror
See yourself through
the looking glass with
this elegant Victorian
inspired mirror.

4
SA3
Victorian
Mirror



All photo frames and mirrors can
be free standing or wall mounted.



5
V97
Nosferatu Photo Frame (Black)
V97 Photo - Obsidian Kerttu



6
SA7
Winged Heart



7
V98
Nosferatu Mirror
(Black)



9
SA19
Rose Heart
Trinket Box
(Black)

5 V97
**Nosferatu
(Black)**

Photo Frame

The perfect gothic photo frame to display a picture of your loved ones. To fit a 6x4" image.

6 SA7
Winged Heart

Photo Frame

A stylish angel inspired, winged heart photo frame. To fit a 4x4" image.

7 V98
**Nosferatu
(Black)**

Mirror

The perfect gothic mirror to add dark style to your abode

8 SA6
Winged Heart

Mirror

Peer through the looking glass with this ornate winged heart mirror.

8
SA6
Winged Heart

9 SA19
**Rose Heart
(Black)**

Trinket Box

A delicate rose detailed, heart shaped trinket box. The perfect place for treasured keepsakes to hide.



SCENTED CANDLE JARS

Blood Rose

A collection of blood rose red, vintage inspired, lidded candle jars, each encapsulating a sensual scented candle. Light the candle and let the dark sensual aroma of the 'Blood Rose' envelop your boudoir! Once the candle has burnt, these stunning, cut glass effect jars can then be used to keep safe your trinkets and treasures!

SCJ6 ▶ Blood Rose Scented Boudoir Candle Jar (Large)

Candle Jar
A blood red glass candle jar
with a scented soy wax candle.
Height approx. 13.5 cm.

SCJ7 ▼ Blood Rose Scented Boudoir Candle Jar (Small)

Candle Jar
A blood red glass candle jar
with a scented soy wax candle.
Height approx. 10 cm.

SCJ9 ▼ Blood Rose Vintage Scented Candle Jar (Round)

Candle Jar
A blood red glass candle jar
with a scented soy wax candle.
Height approx. 10 cm.



SCJ8 ▲ Blood Rose Vintage Scented Candle Jar (Square)

Candle Jar
A blood red glass candle jar
with a scented soy wax candle.
Height approx. 11.3 cm.

SCJ6
With lid
removed &
candle lit.

SCJ9
With lid
removed &
candle lit.

**SCJ2▼
Black Rose Scented
Boudoir Candle Jar
(Small)**

Candle Jar
A black glass candle jar with
a scented soy wax candle.
Height approx. 10 cm.



**SCJ1
Black Rose Scented
Boudoir Candle Jar
(Large)**

Candle Jar
A black glass candle jar with
a scented soy wax candle.
Height approx. 13.5 cm.



Black Rose

A collection of vintage inspired, cut glass effect, lidded candle jars each encapsulating a scented candle. These stunning pieces can then be used to keep safe your trinkets and treasures! The mystical and magical aroma of the 'Black Rose' will delicately fill your boudoir with this sensuous scent.



**SCJ5▲
Black Rose Vintage
Scented Candle Jar
(Round)**

Candle Jar
A black glass candle jar with
a scented soy wax candle.
Height approx. 10 cm.

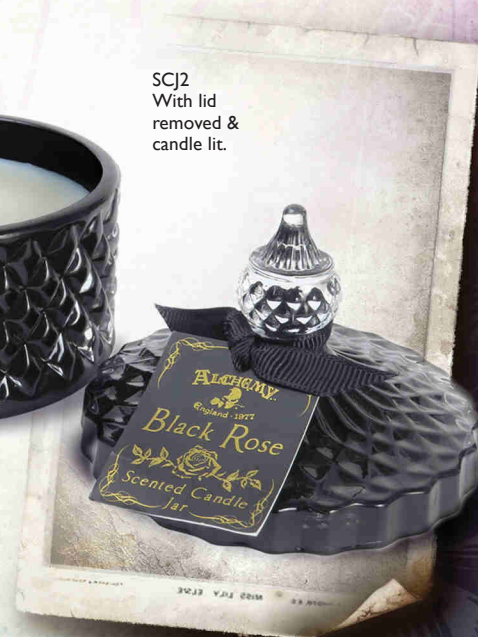


**SCJ3▲
Black Rose Vintage
Scented Candle Jar
(Square)**

Candle Jar
A black glass candle jar with
a scented soy wax candle.
Height approx. 11.3 cm.

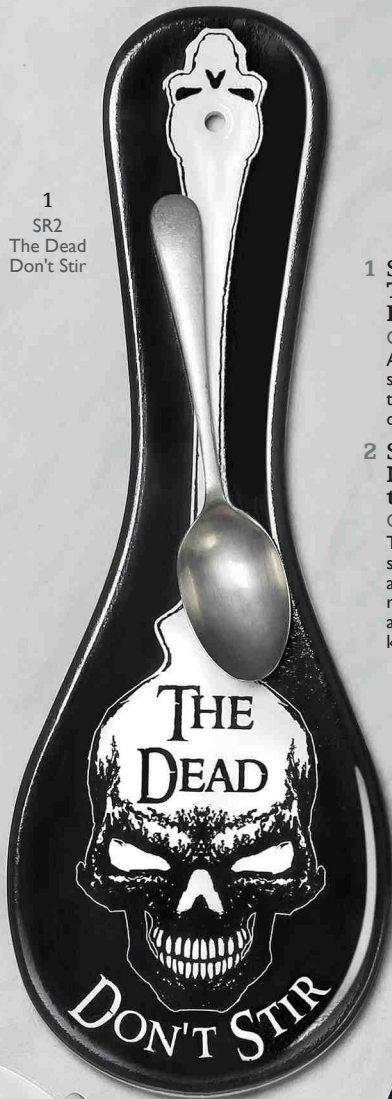


SCJ2
With lid
removed &
candle lit.



KITCHENWARE

1
SR2
The Dead
Don't Stir



1 SR2
**The Dead
Don't Stir**
Ceramic Spoon Rest
A uniquely designed
spoon rest for those
that are looking for a
dark distinctive kitchen.

2 SR1
**No Rest for
the Wicked**
Ceramic Spoon Rest
This piece will look
stunning by your hob as
a fully functional spoon
rest or hung on the wall
as a dark addition to your
kitchen.



2
SR2
No Rest
For The
Wicked

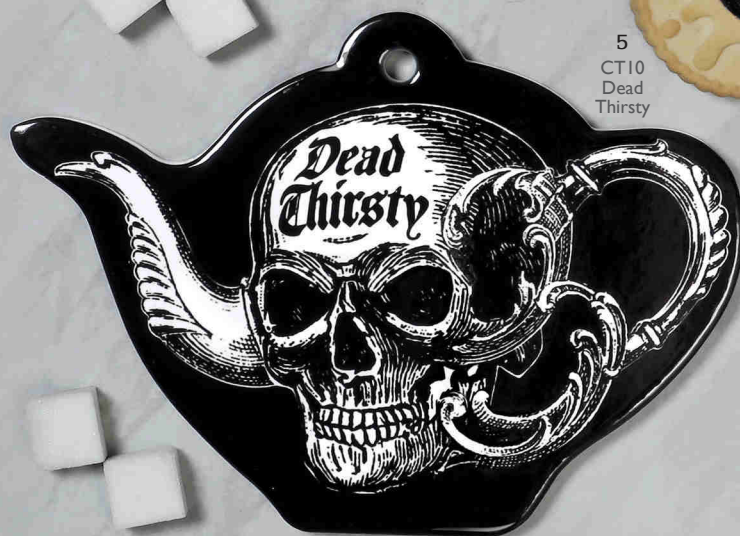
3
CT8
Witches
Brew



4
CT9
Freaks Like Me...



5
CT10
Dead
Thirsty



3 CT8
Witches Brew
Ceramic Trivet
A functional teapot
shaped coaster bearing
the 'Witches Brew' design.

4 CT9
Freaks Like Me...
Ceramic Trivet
A darkly beautiful
addition to any kitchen.

5 CT10
Dead Thirsty
Ceramic Trivet
A dark and functional
teapot shaped coaster
bearing the 'Dead Thirsty'
baroque skull design.

CAULDRON COASTERS



Alchemy designed, cauldron inspired coasters are here! This exclusive ceramic cauldron shape has been created to perfectly present our most popular Alchemy artwork! A sensational gift for the Witch or Warlock in your realm.

(Coasters are approx. 96mm X 136mm with non-slip cork backing.)



CC26 ►
Ouija
Cauldron-Shaped
Coaster



CC27 ▲
Witches Brew
Cauldron-Shaped Coaster



CC28 ▲
Nosferabru
Cauldron-Shaped Coaster



CC29 ▲
Purrfect Brew
Cauldron-Shaped Coaster



CC30 ▲
Magical Catnip
Cauldron-Shaped Coaster



CC31 ▲
Bat Brew
Cauldron-Shaped Coaster



CC32 ▲
Freaks Like Me...
Cauldron-Shaped Coaster



▲ SR6
Pot Head
Ceramic Spoon Rest

▲ SR5
Freaks Like Me Drink Tea
Ceramic Spoon Rest

SR7 ▲
Purrfect Brew
Ceramic Spoon Rest

◀ SR4
Witches Brew
Ceramic Spoon Rest

SR8 ▶
Bat Brew
Ceramic Spoon Rest

A unique addition to any Witches kitchen. Give your spoon a rest or dispose of your teabags on these teapot shaped rests!

▲ ATS5
Bat Brew
Tea For One Set
A beautiful, high quality, fine bone China, 'Tea For One Set'. This three piece set includes everything you need to brew your perfect cup of tea. Presented in a striking gift box and features the 'Bat Brew' design. Dishwasher safe.

▲ ATS4
Purrfect Brew
Tea For One Set
A beautiful, high quality, fine bone China, 'Tea For One Set'. This three piece set includes everything you need to brew your perfect cup of tea. Presented in a striking gift box and features the 'Purrfect Brew' design.

TEA
FOR
ONE



Three piece set.
Tea pot, cup and saucer,
with gift box.



**SR3
Raven & Rose**
Ceramic Spoon Rest
A functional spoon rest
and dark stylish addition
to your kitchen space.



▲ **ATS3
Witches Brew Hex**
Tea For One Set
A beautiful, high quality, fine bone China,
'Tea For One Set'. This three piece set
includes everything you need to brew
your perfect cup of tea. Presented in
a striking gift box and features the
'Witches Brew Hex' design.
Dishwasher safe.



▲ **ATS2
Freaks Like Me Drink Tea**
Tea For One Set
A beautiful, high quality, fine bone China,
'Tea For One Set'. This three piece set
includes everything you need to brew
your perfect cup of tea. Presented
in a striking gift box and features
the 'Freaks Like Me Drink Tea' design.



MUG AND SPOON SETS



ALMUG14
Dragon Is Stirring
Mug & Spoon Set



ALMUG15
Hexy Witch
Mug & Spoon Set



Cause a stir with these incredible mug and spoon gift sets! Perfect for that tea or coffee loving friend!
Or maybe a little treat just for you, it will truly serve you a fiendishly good brew.



ALMUG16
Witches Brew
Mug & Spoon Set



ALMUG17
Stirring Up Trouble
Mug & Spoon Set

ALMUG18
You Stir My Blood
Mug & Spoon Set



ALMUG19
Freaks Like Me Drink Tea
Mug & Spoon Set



390ml (13oz) Capacity with double-sided, custom design on mug & mini design on spoon.



ALMUG20
Purrfect Brew
Mug & Spoon Set



Each Mug & Spoon set come in purpose designed, sturdy presentation boxes.

MUG AND SPOON SETS

ALMUG21
Bat Brew
Mug & Spoon Set



ALMUG22
Stirring Up Magic
Mug & Spoon Set



390ml
(13oz) Capacity
with double-sided,
custom design
on mug & mini
design on
spoon.



ALMUG23
Baphomet
Mug & Spoon Set



ALMUG24
Hellhound
Mug & Spoon Set

ROSE GOLD MUGS

ALMUG12 Black Coffee Black Clothes

Rose Gold Mug
Decorated with the perfect
goth poem - Black coffee, black
clothes, black magic, black rose.

Gift Box Packaging

Each Rose Gold Mug comes
with its own printed gift box,
making it the perfect gift!



Half Pint Capacity, black ceramic mugs with rose gold motif and white lining.

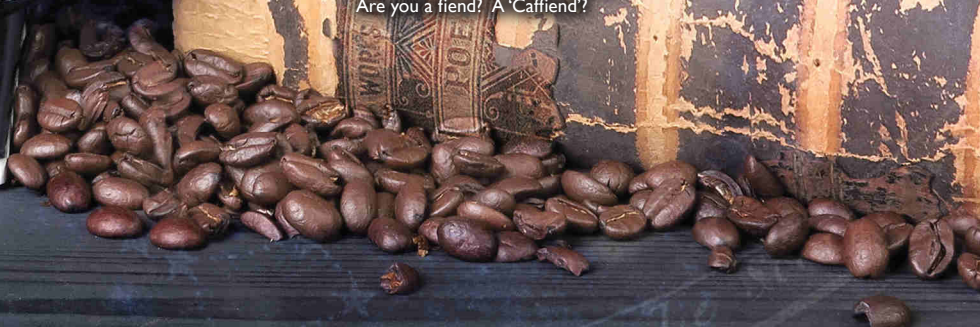
ALMUG10 Dead Thirsty

Rose Gold Mug
For the secret vampires amongst us.



ALMUG13 Caffiend

Rose Gold Mug
Perfectly suited to fans of caffeine.
Are you a fiend? A 'Caffiend'?



COUPLES MUGS

Couples Mug sets are a truly unique and exquisite gift, perfect for weddings, anniversaries or to show that special someone just how much you love them!
Set of 2 complimenting, fine bone China* mugs, with decorative heart shaped handles and featuring original Alchemy artwork.



CM1
Witch & Warlock

Couples Mug set
Witches and Warlocks will be sipping potions and making magic with these divine mugs.

350ml
(11oz) Capacity
with double-sided,
custom design
on mug.



CM2
Queen of the Night & Lord of Darkness

Couples Mug set
State your status as the ultimate power couple and be the Queen of the Night & Lord of Darkness - rulers of your own empire!



CM3

Love Birds

Couples Mug set

These beautiful 'Love Birds' couple mugs feature original Alchemy art work of ravens forming a heart shape, the ultimate symbol of love just with a darker twist!



CM4

Saint & Sinner

Couples Mug set

Saint or Sinner! You choose! One day a sinner, turn the mug around and you are a saint! Featuring both artworks on different sides, one side saint cat, the other side sinner cat!



Couples Mug sets come in purpose designed, sturdy presentation boxes making them the perfect gift!

*Fine bone China does not contain animal material.

TRAVEL MUGS

Show the world your own unique style when on the go! These incredible travel mugs are made from the highest quality ceramic material and double walled to insulate. They keep your drinks hot or cold for longer than you will believe.



MRDWM1 ▲
Witches Brew
Double Walled Travel Mug



MRDWM2 ▲
Gothee Coffee
Double Walled Travel Mug



MRDWM3 ▲
Purrfect Brew
Double Walled Travel Mug



MRDWM4 ▲
Dead Thirsty
Double Walled Travel Mug



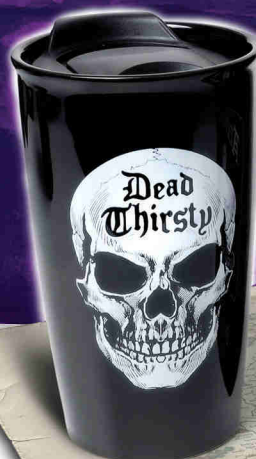
MRDWM5 ▲
Dying For A Drink
Double Walled Travel Mug



MRDWM6 ▲
Bat Brew
Double Walled Travel Mug



MRDWM7
Freaks Like Me
Drink Tea
Double Walled Travel Mug



All mugs are approx. 15cm in height. Capacity 360ml (12oz) and all come in purpose designed, sturdy presentation boxes.

BOTTLE STOPPERS



**RGBS1
Vampire Blood**

Bottle Stopper
Is that red wine you're drinking or perhaps its 'Vampires Blood'?



**RGBS2
Let's Get Hammered**

Bottle Stopper
Let's Get Hammered - Why the devil not!!!



**RGBS3
Wyverex Dragon**

Bottle Stopper
The classic and original artwork by Alchemy beautifully adorns this bottle stopper!



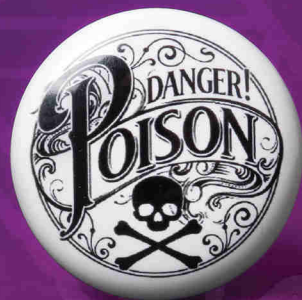
**RGBS4
Triple Moon Cat**

Bottle Stopper
A magic black cat guards your sacred drink!



**RGBS5
Black Cat**

Bottle Stopper
A mysterious guardian for your bottle!



**RGBS6
Poison**

Bottle Stopper
Is it really Poison?
Would you dare to take a sip?



**RGBS7
Demon Drink**

Bottle Stopper
The Demon Drink cleverly inscribed within a Devils skull!



**RGBS8
Witches Potion**

Bottle Stopper
Dare you drink the 'Witches Potion'? Protect your favourite tippie with this cunning rebrand!



**RGBS9
Drink Me If You Dare**

Bottle Stopper
Do you dare drink the contents of the bottle?
This 'Drink Me If You Dare' bottle stopper just might make you think twice!

Wonderfully unique ceramic & cork bottle stopper collection for your favourite tippie or perhaps a gift for a loved one. Adorned with original Alchemy art work - 9 to collect!

Approx. 40mm diameter.



CERAMIC COASTERS



Original Alchemy artwork Ceramic coasters
for your hot drinks, cold drinks, Gothtails or
spirits....perfect for your Crypt!
Why not collect the whole range!

(All coasters come with a non-slip
cork backing and are sold separately)



A set of 4 original Alchemy ceramic artwork coasters with slate-style edges and a high gloss finish. (Dimensions: approx. 10.8cm X 10.8cm)



CC11
Chemical Wedding
Ceramic Slate-Style Coaster



CC12
Poe's Raven
Ceramic Slate-Style Coaster

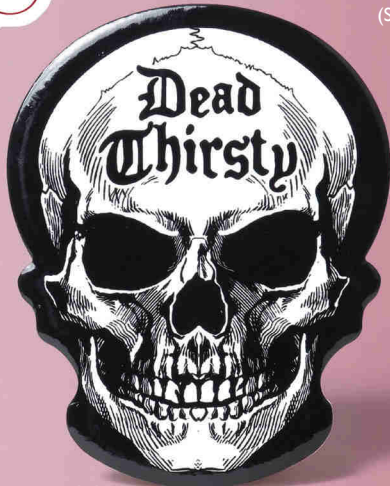


CC13
Sacred Cat
Ceramic Slate-Style Coaster



CC14
Paracelsus Cat Roses
Ceramic Slate-Style Coaster

A set of 3 original Alchemy ceramic artwork cut-out shaped coasters.
(Skull coaster dimensions: approx. 12cm X 9.5cm; Cat coasters: approx. 11cm X 10.5cm)



CC15
Dead Thirsty Skull
Ceramic Skull-Shaped Coaster
Are you 'Dead Thirsty'? If so this darkly fun coaster is the perfect addition to your crypt!



CC16
Triple Moon Cat
Ceramic Cat-Shaped Coaster
Dark but cute, this triple moon magic cat coaster is definitely that!



CC17
Sacred Cat
Ceramic Cat-Shaped Coaster
The exquisite and sought after Alchemy original artwork bestows this purrfect cat shaped coaster!

A set of 8 new original Alchemy ceramic artwork coasters in classic circular design. (Dimensions: approx. 9cm X 9cm)



CC18
Baphomet
Ceramic Coaster
Add some devilish decor to your crypt. This Baphomet coaster will subtly show your dark side... 'If you know, you know'!



CC20
Saint
Ceramic Coaster
Are you a saint or are you a sinner? Whatever you are this original Alchemy artwork coaster will definitely be a talking point for your guests.



CC22
Lord of Darkness
Ceramic Coaster
For the 'Lord of Darkness' is your life! Team with the 'Queen of the Night' coaster and state your position as the ultimate power couple of the dark night!



CC24
Witch
Ceramic Coaster
Are you a witch? Yes.. then celebrate it and add a little glamorous witchy decor into your home with this sassy little Witch coaster!



CC19
Love Birds
Ceramic Coaster
This beautiful 'Love Birds' coaster features original Alchemy artwork of Ravens forming a heart shape, the symbol of love with a darker twist!



CC21
Sinner
Ceramic Coaster
Are you a saint or are you a sinner? Whatever you are this original Alchemy artwork coaster will definitely be a talking point for your guests.



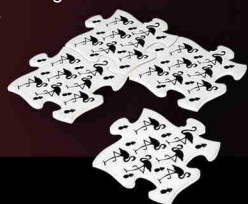
CC23
Queen of the Night
Ceramic Coaster
For you the one and only Queen of the Night! Teamed with the 'Lord of Darkness' coaster.



CC25
Warlock
Ceramic Coaster
Calling you Warlocks out there, celebrate your magical powers with a little home decor!



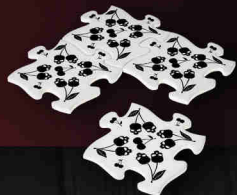
**CJ2
Flamingo / Pineapple**
Ceramic Jigsaw Coasters
4 piece black flamingo
and pineapple design
coaster set.



**CJ3
Black Cats**
Ceramic Jigsaw Coasters
Black cats, pentagrams,
stars & crescent moons
adorn this stunning 4
piece coaster set.



**CJ4
Black Skull Cherries**
Ceramic Jigsaw Coasters
Black cherries or black skulls?
You decide! 4 piece coaster set.



**CJ5
Black Raven & Rose**
Ceramic Jigsaw Coasters
Alchemy raven and rose
4 piece jigsaw coaster set.



Gothtails!
Featured Jigsaw coaster sets:
CJ3 Black Cats
CJ1 Gothic Cocktail



CJ1 - Gothic Cocktails - The Full Set



CC1 - The Demon Drink



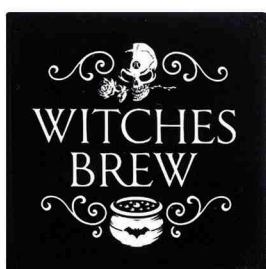
CC2 - Summon the Spirits



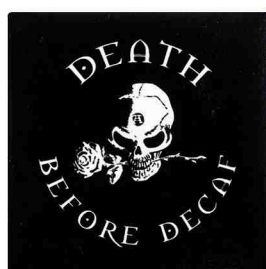
CC3 - Lets Get Hammered



CC4 - Feeling Absinthe Minded



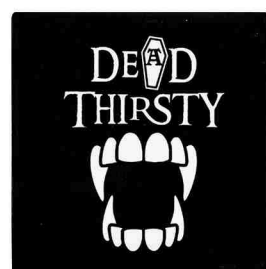
CC6 - Witches Brew



CC7 - Death Before Decaf



CC8 - Catty Without Coffee



CC9 - Dead Thirsty



CC10 - Black Coffee



1
CT1
Chop Chop

2
CT4
Cat's Kitchen

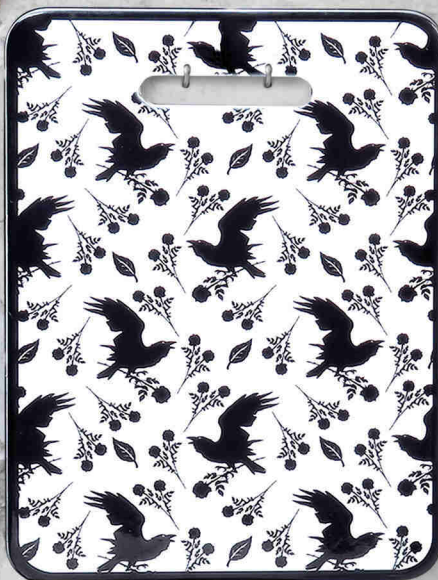
3
CT5
Hot Stuff

1 CT1
Chop Chop
Ceramic Chopping Board
A fun and slightly gruesome
design to add a little
quirkiness into any kitchen!

2 CT4
Cat's Kitchen
Ceramic Chopping Board
The dark and beautiful
Alchemy black cat artwork
is presented on this unique
'Witches Kitchen' chopping
board.

3 CT5
Hot Stuff
Ceramic Chopping Board
Looking for some hot stuff
in your kitchen? Then look
no further than this devilish
addition to your kitchen
space.

All trivets and chopping boards can be hung up on a wall or
used as a functional item. Either slice food, stand hot pans on,
or used as a fun serving platter!



◀ **CT3**
Raven & Rose
 Ceramic Cheese
 Board Trivet
 This elegant Alchemy
 raven and rose design
 will look amazing in
 any kitchen or dining
 room.

CT2 ▶
Magic Symbols
 Ceramic Cheese
 Board Trivet
 Bring some magic
 to your kitchen area
 with this simply divine
 magic symbol trivet /
 chopping board. This
 perfect addition to any
 witches kitchen will
 look simply magical
 hanging on a wall.
 Shown in use below.

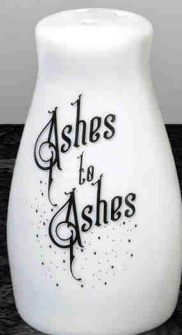


CT11 ▲
Roses Are Black...
 Trivet
 A totally functional trivet or a decorative
 piece for the boudoir! A perfect token of
 love!

CT12 ▶
Witches Kitchen
 Trivet
 A magical 'Witches Kitchen'
 chopping board / serving
 trivet. Stand this beautiful
 piece next to your bubbling
 cauldron and be the envy of
 witches for miles around!



▲ **MRSP1**
S+P
 Salt & Pepper Set



▲ **MRSP2**
Ashes / Dust
 Salt & Pepper Set



▲ **MRSP3**
Cats
 Salt & Pepper Set

These unique Salt & Pepper sets form part of
 the exciting Home & Gift Collection brought
 to you by Alchemy.

▼ CT6
Trick or Treat

Ceramic Trivet

This 'Trick or Treat' trivet or serving plate is not just for Halloween. Display treats all year round on this darkly delightful piece.

CT7 ▶
Skull Cupcake

Ceramic Trivet

This dark but cute skull cupcake artwork will look sensational in any kitchen or dining room.





**SCR1►
Black Rose
Hanger / Tie Back**

Curtain Tie Back / Hook
The perfect place for your
Alchemy necklaces, scarf
collection or car keys.
Can also be used as a
curtain tie back.



**SCR3 ▼
Black Rose
Candle Holder**

Candle Holder (Pillar)
Created to fit a pillar candle,
this holder can also be used
as a useful little pot.



**SCR3 ►
Black Rose
Candle Holder
(Pillar)**



**SCR3
Black Rose
Candle Holder (Pillar)
Top View**



BLACK ROSE CERAMICS



**V54 ▲
Masque Of
The Black Rose**

Wall or Table Mirror
All that remains of a legendary
masquerade ball from the Eve of
St. Levantius A noble, boyar vampire
tryst, where the dark patricians
revelled in a night of pure sensuality.
Approx. 23.5cm (9.25") high.

HANGING DECORATIONS



**HD15
Coffin Cross**
Hanging Decoration
A coffin, bearing a knight's cross is the vessel to carry you safely through from this life into the next.



**HD19
Devil Heart**
Hanging Decoration
Love, is sinful, naughty and oh, so much fun!



**HD17
Viking**
Hanging Decoration
Enjoy your home on Midgard with this wind chime displaying the runic abbreviations of the nine realms of the Viking world.



**HD18
Planchette**
Hanging Decoration
Celebrate the technology of the 19th century seance.



**HD16
Pumpkin Skull**
Hanging Decoration
Add a bit of spookiness to any domicile with this jack-o-lantern pumpkin wind chime



**HD20
Cat Silhouette**
Hanging Decoration
Complete your home interior transformation or simply add a little witchy magic to your outdoor space.



**HD21
Baphomet**
Hanging Decoration
Framed upon the occultist's pentagram, Eliphas Levi's portrait and representation of the dualist, goat-headed deity.



**HD22
Night Owl**
Hanging Decoration
Companion to Athena the Greek goddess of wisdom and war.



**HD23
Night Unicorn**
Hanging Decoration
The magical power of the unicorn rests in it's singularity for it is the sole survivor of an ancient lineage, who's fellows all perished in the great flood.

HANGING DECORATIONS



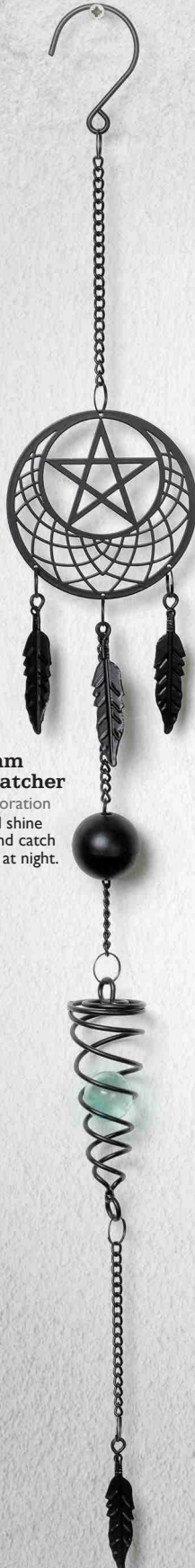
Add your own unique style to any room, home or garden with these Alchemy designed hanging decorations / wind chimes.

- Suitable for both indoor and outdoor use. -



HD7 Raven

Hanging Decoration
Keep the spirit of 'Poe' alive in your home and garden with this impressive black raven inspired wind chime / hanging decoration.



HD8 Pentagram Dream Catcher

Hanging Decoration
Shimmer and shine in the light and catch your dreams at night.



HD9 Black Cat & Moon

Hanging Decoration
Add a little witchy magic to your outdoor space or home interior.



HD10 Spider

Hanging Decoration
This three in one hanging decoration, wind spiral and wind chime will make a dark statement in your home or garden.



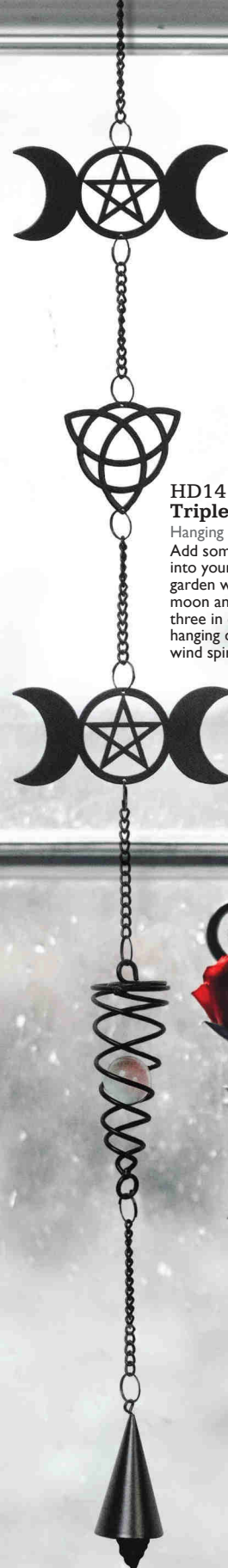
**HD11
Wyverex Dragon**
Hanging Decoration
Based on our original
iconic Alchemy Wyverex
dragon. Truly a fantasy
lovers dream décor item.



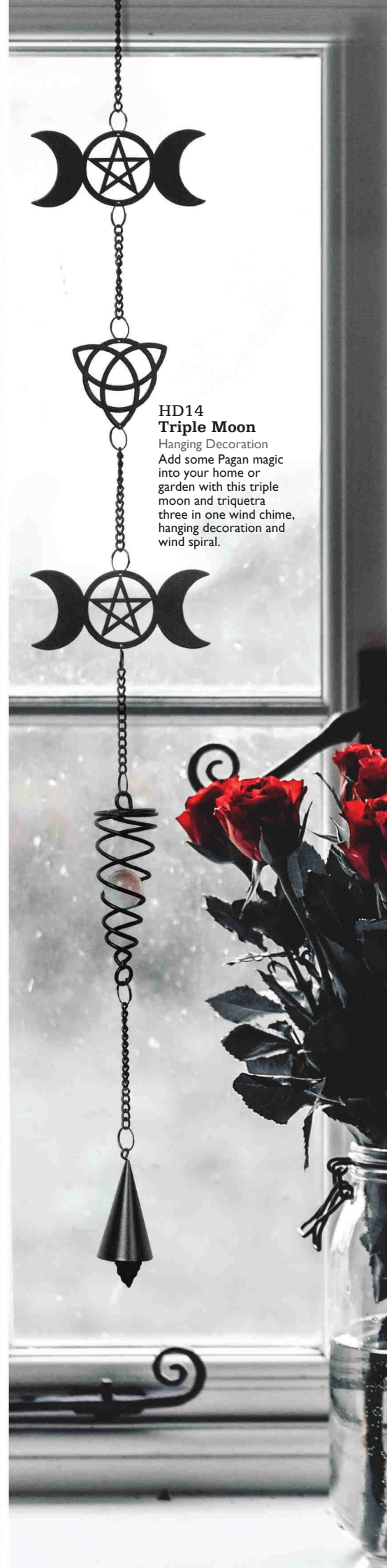
**HD12
Gothic Bat**
Hanging Decoration
The Gothic icon the
black bat can now be
a centre piece in your
crypt or garden.



**HD13
Pentagram**
Hanging Decoration
Featuring three dancing
pentagrams. This hanging
decoration will look
incredible in your home,
boudoir or garden.



**HD14
Triple Moon**
Hanging Decoration
Add some Pagan magic
into your home or
garden with this triple
moon and triquetra
three in one wind chime,
hanging decoration and
wind spiral.



HANGING DECORATIONS



1
HD5
Eye of
Providence



2
HD2
Crystal Dream
Catcher



3
HD6
All Seeing
Eye



4
HD4
Crystal Fairy
Unicorn

- 1 HD5
Eye of Providence
Hanging Decoration
The 'Eye of Providence' wind chime will bring chimes of light and glory into your home.
- 2 HD2
Crystal Dream Catcher
Hanging Decoration
Turn unwanted nightmares into beautiful dreams.
- 3 HD6
All Seeing Eye
Hanging Decoration
Spread rays of positivity through your home with this 'All Seeing Eye' hanging decoration.
- 4 HD4
Crystal Fairy Unicorn
Hanging Decoration
Add some magic into your private space and transport yourself to a magical kingdom of fairies and unicorns.

1
ROSE3
Large Black
Rose Head



2
ROSE6
Black Rose
Hanging Ball



3
ROSE4
Small Black
Rose Head



4
ROSE5
Black Rose
with Stem



5
ROSE7
Black Rose
Heart



V85 Triple Moon
Candle Holder



SA9 Rose
Candle Stick



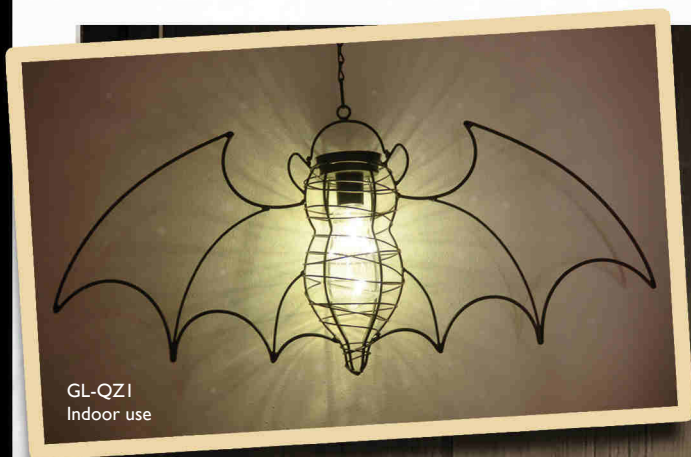
1 ROSE3
**Large Black
Rose Head**
Black Roses
An oversized artificial
black rose with soft
foam rose petals.

2 ROSE6
**Black Rose
Hanging Ball**
Black Roses
An bundle of artificial
soft foam black roses
with hanging wire.

3 ROSE4
**Small Black
Rose Head**
Black Roses
An oversized artificial
black rose with soft
foam rose petals.

4 ROSE5
**Black Rose
with Stem**
Black Roses
An artificial black
rose with soft foam
rose petals and stem.

5 ROSE7
**Black
Rose Heart**
Black Roses
A heart shaped bundle
of artificial soft foam
black roses with hanging wire.



GL-QZ1
Indoor use

GL-QZ1 ▲►
Bat Garden Light
LED Light



GL-QZ1
Outdoor use

LED LIGHTS

Add your favourite creature of the night to your home or garden and illuminate for all to see! These solar LED lights will be the perfect addition to your home or garden.

Battery powered LED lights.

To operate: Simply push the ON button and wait for night to fall.

(For indoor or outdoor use.)



GL-QZ2
Indoor use

GL-QZ2 ▼►
Black Cat Garden Light
LED Light



GL-QZ2
Outdoor use

AVAILABLE NOW

The Spellbound Heart

16 MONTH

Calendar 2024



january



february



march



april



may



june



july



august



september



october



november



december

A sixteen month calendar
richly illustrated throughout
with Alchemy's unique brand
of mesmerising

Gothic Artwork

guaranteed
to truly transfix the soul
and spellbind the heart

A sixteen month
CALENDAR
September 2023
December 2024



SOCKS



SOX001
Catmas
Socks (1 size)



SOX002
The Alchemist
Socks (1 size)



SOX003
Gothic Bat
Socks (1 size)



SOX004
Feet Are Killing Me
Socks (1 size)



SOX005
Dead Man Walking
Socks (1 size)



SOX006
Dead On My Feet
Socks (1 size)

CHRISTMAS JUMPERS

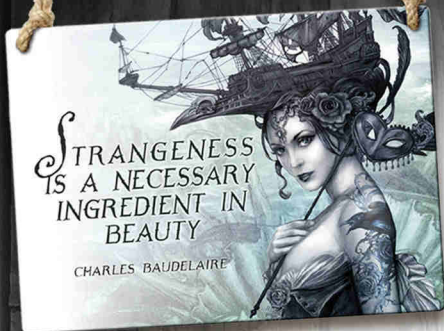


XJ3 : **WHITE HART
WREATH**
SIZES : S / M / L / XL



XJ5 : **BLACK CAT**
SIZES : M / L / XL

HANGING SIGNS



ALHS14

HANGING SIGNS
From the philosophical musings of the Alchemist himself and the artists of Alchemy Studios, come a collection of profound and essential dark pearls of wisdom; 90 x 65 mm mini, enamelled metal signs, pre-strung to hang anywhere.



ALHS15



ALHS19



ALHS20



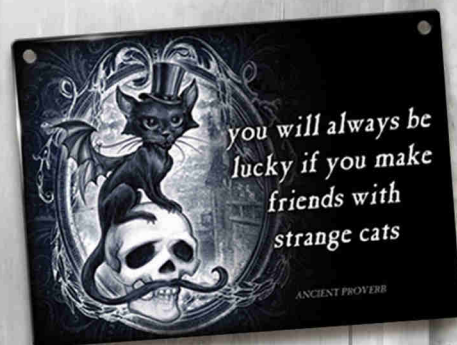
ALHS18



ALHS8



ALHS10



ALHS11



ALHS1

M'ERA LUNA



ALCHEMY

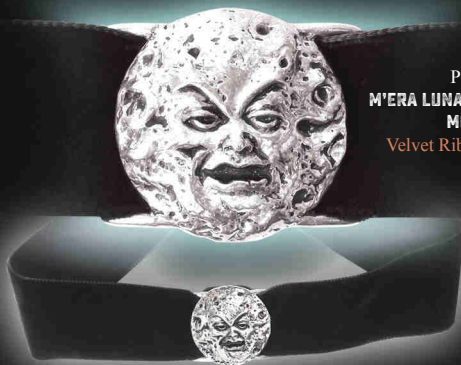


® TM

~ OFFICIAL MERCHANDISE ~

THE MAN IN THE MOON COLLECTION

The unmistakable face of the World's greatest Goth & Alternative music festival, M'ERA LUNA. Inspired by the classic Georges Melies 1902 film, 'Le Voyage dans la Lune'.

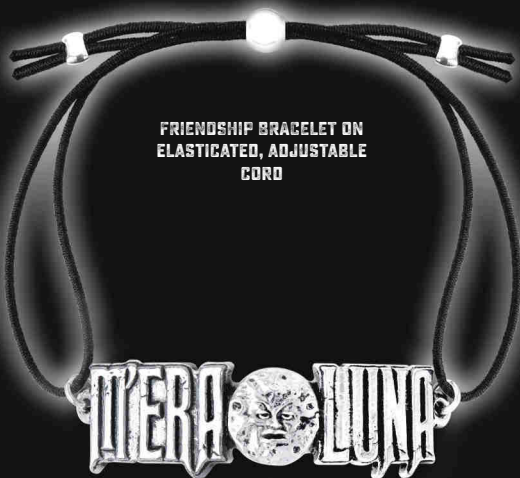


P813
M'ERA LUNA - MAN IN THE MOON
Velvet Ribbon Choker

Can also be tied around the wrist as a bracelet.



R218
M'ERA LUNA - MAN IN THE MOON
Ring
(Sizes: Y, W, T, Q)



AML4
M'ERA LUNA MOON LOGO
Friendship Bracelet

The indubitable insignia of M'era Luna, the forlorn face of Méliès' 1902 man in the moon punctuating the festival's famous logo.

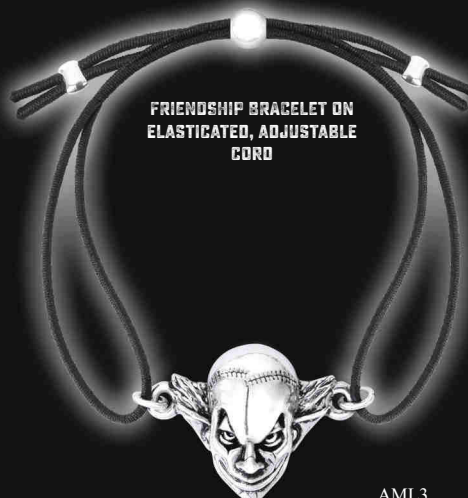


P782
M'ERA LUNA MELIE'S MOON
Pendant

A rare glimpse at the real man in the moon, seen through the thicket's gnarled and twisted branches. Pewter and mirror, relief modelled man in the moon pendant.



E386
M'ERA LUNA EVIL CLOWN
Ear Studs
Relief modelled Evil Clown's head ear studs.



AML3
M'ERA LUNA EVIL CLOWN
Friendship Bracelet
Relief modelled Evil Clown's head. On elasticated, adjustable cord.



P899
M'ERA LUNA MOON LOGO
Necklace

The indubitable insignia of M'era Luna, the forlorn face of Méliès' 1902 man in the moon punctuating the festival's famous logo.



PP500
Metallica -
Ninja Star



PP501
Iron Maiden -
Book Of Souls
Eddie



PP504
Iron Maiden -
Piece Of Mind
Eddie



PP505
Motorhead -
War Pig



PP506
Pink Floyd -
Dark Side Prism



PP507
Metallica -
Master Of
Puppets
1986 Cross



PP508
Slayer -
Pentagram
Logo



PP510
5 Finger Death Punch -
Knuckle Duster



PP515
David Bowie -
Flash



PP517
Judas Priest -
Razorblade



PP520
AC/DC -
Lightning
Logo



PP522
Ghost -
Papa Logo



PP523
Metallica -
M72 Logo

EAR STUDS

PIN BADGES



PE1

Motorhead -
War Pig Studs



PE4

AC/DC -
Logo Studs



PE6

Iron Maiden -
Piece Of Mind
Studs



PE8

David Bowie -
Flash Studs



PE9

Pink Floyd -
Division Bell
Studs



PE16

Ghost -
Logo
Droppers



PE17

Metallica -
Ninja Star Studs



PC501

Motorhead -
Logo



PC502

Pink Floyd -
Division Bell Heads



PC504

Slayer - Eagle



PC505

Iron Maiden -
Enamelled Logo



PC506

Metallica -
Damage



PC513

Metallica -
Justice For All



PC514

Mötley Crüe -
Dr. Feelgood *

* Mötley Crüe items not available in the U.S.



HRWL444

Metallica -
Logo



HRWL446

AC/DC -
Logo



HRWL447

Iron Maiden -
Logo



HRWL452

AC/DC -
Lightning Logo



HRWL453

Iron Maiden -
Logo



HRWL456

Metallica -
Classic Logo



HRWL457

Ghost -
Logo

motorhead



ARR1
Motorhead
Warpig Bust
Ornament

A fully 3D replica of the
iconic 'Motorhead Warpig'
logo. A high quality, hand
finished resin masterpiece!

**WARPIG
BUST**

**OFFICIALLY
LICENSED**



ALCHEMY[®] ROCKS



VIEW OUR FULL COLLECTION OF OFFICIALLY LICENSED ROCK MERCHANDISE HERE :

♦♦ WWW.ALCHEMYENGLAND.COM/ICAT ♦♦

ALCHEMY[®]™



England • 1977

Alchemy LIFETIME GUARANTEE . . . Alchemy is the best!

And we guarantee our Alchemy England crafted pewter products* to be hand made to the highest standards and of the finest materials, and will therefore repair or replace any such purchased item suffering from defects or faulty workmanship at any time, free of charge!

(*made at our Leicester workshops - please see our Guarantee and Returns Policy at www.alchemyengland.com/guarantee).

Real Pewter!

The metal used in the manufacture of all Alchemy's pewter products is the highest grade "English Pewter". Some manufacturers misleadingly use the term 'pewter' to describe alloys containing quantities of lead, cadmium and nickel plating etc. This is **NON COMPLIANT** and results in inferior, more easily made products which are heavier, softer and of a darker colour and are much more prone to tarnishing and disfigurement. Please note, many imitations and forgeries are also made of zinc, which is cheap and will easily break. English Pewter is the finest grade of pewter, (to BSEN611-1:1995 standard). Traditionally, pewter was a mixture of lead and tin, but today, English Pewter is a rich, high-grade alloy of 92% tin with copper, (plus a few legitimate trace elements), and is regarded as a 'semi-precious' metal valued second only to silver. For jewellery and accessories this is the safest tin-based alloy in use and is fully lead, cadmium & nickel compliant to California Proposition 65 for total lead & cadmium content, Commission Regulation (EU) 494/2011 (REACH) for lead & cadmium and European standard BSEN1811:2011 for nickel. English Pewter is very much harder to craft than zinc alloys and the old and primitive forms of pewter, which contain significant amounts of toxic impurities which ease production, however, please beware as these poor alloys are still used by many manufacturers around the world today.

Brand Protection:

All products, designs and images are the exclusive copyright of Alchemy Carta, England, and are registered designs and trademarks world-wide. Alchemy Studios conceive, research, design and develop all their ideas and products themselves, at considerable cost, to bring you fresh, new creations. Any attempt at forgery, imitation or passing-off endangers Alchemy's existence. Therefore, infringements will result in investigation leading to prosecution. Any assistance from our customers against piracy will be greatly appreciated. Please report via our website.

Looking after your Alchemy

Pewter, like silver, may tarnish, but can easily be polished up to a brilliant lustrous shine, using a brass or silver polishing wad and a wipe with a dry cloth. DO NOT put pewter into a salt-loaded dishwasher, which could corrode a polished surface. Alchemy Guarantee: Alchemy will gladly replace any product proven to be defective.

Trade Memberships

Alchemy Carta Ltd. are proud to be members of the Giftware Association.

Trade & Identification Marks

All products, space permitting, are marked with one or more of the following identification marks, or their derivatives :



www.alchemyengland.com



Model is wearing:

P864 Rose Briar necklace
E425 Love Bats earrings

Model: Lillith Vampyre. @lillith_vampyre

Disclaimer:

At Alchemy we make all our jewellery by hand. We are very proud and work extremely hard to achieve our high standards. However, we also have to buy-in components from other suppliers and while we do our very best to maintain this quality, we cannot always rely on their availability or consistency. We therefore reserve the right to change crystals, chains and other findings, or even to discontinue pieces if necessary and apologise for any such disappointment.

